

Woodworkers Club OF HOUSTON

VOL 10, No. 1

JANUARY, 1994

Officers

Sharon Buckley - President 944-6739
Art Chester - Vice President 469-1990
Steve Procter - Sec./Treasurer 728-1459

Board of Directors

Bud Froelich - 859-6620
Jimmie Harp - 664-4906
Ted Kurland - 729-4693
Joe Wainright - 666-8475

Sharon Buckley - Newsletter Editor 944-6739

DECEMBER PROGRAM

Our program was hosted by the folks from Franklin International, Bruce Nicholas our local representative introduced Dale Zimmerman Technical Specialist from the Ohio division of the Adhesives and Sealants Group.

Franklin was the creator of the alphatic resin glues and now the one part Titebond II waterproof glue. Titebond II glue is approved for food contact surfaces, such as butcher block cutting boards and bowls.

One very interesting fact about glues that Dale told us about is the chalk temperature. If you glue up wood when the temperature of the wood, not the air temperature in the room is below 50 degrees the glue line will turn white and will have no bond strength. Critical time for bonding strength is the first 30 mins. to 2 hours.

The amount of clamping depends on the moisture content and the moisture in the air. Glue has to dry by losing water. If you have a poorly fitted joint you will have to increase the clamp time.

It is not necessary to apply glue to both surfaces of the wood. The one exception is end grain, with end grain you must first size or seal before gluing as the end grain acts like many straws sucking up glue. Applying glue to only one edge will cut down on glue squeeze out.

What will freezing and thawing do to Titebond? After 5 cycles the glue will be thicker or grainy but should not affect the glue strength. But before you glue up that 40 ft conference table make a test of the glue strength by gluing up a sample.

It is best not to store Titebond above 90 degrees which means most of us will have to store Titebond in our house.

All Titebond glue bottles with a paper label have an expiration date stamped on the bottle. But Dale says that they last a lot longer than the date. They first started stamping Titebond II with only one year date because they could not test all the ways woodworkers

would store the glue, but woodworkers are still using Titebond II 2 years past that date.

Titebond has a 2 year date stamp on the bottle but should be good for 2 years past that date. Some of the problem is the plastic bottles that the glue is packaged in. Air will penetrate the bottle. For the most cost saving its best to buy the gallon jug of glue and dispense some into a glue bottle, if you do not use glue up fast transfer the remainder of the glue into a glass jar as air cannot get through the glass.

On the small bottles of glue it says to shake well which is almost imposible so its best to squeeze the bottle.

If you have problems with a glue join they have a 800 help line that can solve many problems on the phone. if not they will accept a sample for testing.

For help call 1-800-347-GLUE.

A question was asked if you could apply too much clamp pressure and weaken the joint, Dale says that with Titebond glues you don't have that problem.

Franklin does not have a brown glue at this time but is talking about one in the future, a dark glue can help to cover up bad joints on dark wood. They are also working on a longer open time because some woodworkers say that Titebond II dries too fast but some woodworkers use it mainly because it does dry fast.

There is no solvent that will remove dried Titebond II glue from wood.

Will heat or cold affect a glue joint? Up to 120 degrees constant will not affect a glue joint, prolonged over 150 degrees can cause the glue to become brittle. The glue will also become brittle at 20 to 40 degrees below zero.

Dale says that alot of times they learn from their customers about what can be glued or how the glue will hold up to different situations.

One customer has informed him that he has experimented with washing cutting boards in a dishwasher and has successfully washed the board 22 times --so far so good.

Ken Wallis showed Dale how he glued Corian to wood and turned bowls on his lathe. Dale looked at the joints and said that they looked good and would probably hold fine.

What about using Titebond II for biscuit jointing? Because of the fast set up time with Titebond II it would probably be better to use Titebond as it has a longer set up time.

What about Franklin Hide glue for biscuit jointing? One problem with hide glue is that it has a limited shelf life--about one year. Hide glue will also absorb water including humidity.

Dale says to use the glue to fit the situation. Franklin has developed a new water based contact cement that at this time is only available in certain areas and only to commercial customers. But will be available in the future to us all. Its called Wet Set and as the name implies you apply the laminate while the glue is wet. When you apply the glue it is blue and when it turns to green you apply the laminate, the glue is still wet but the laminate will not move.

Dale was also asked about construction adhesives. He said that construction adhesives were designed for the ill fitted joints of the construction industry and not like wood glues that are designed for finely fitted joints.

Construction adhesives must bridge gaps of 1/16 of an inch and a good construction adhesive must hold up to a pine joist being soaked in water for 2 days and still retain strength and a pine joist being soaked in water for two days and frozen and still retain the glue strength.

These are just a few of the questions answered by Dale from the members. This was a very interesting and informative program and we would like to Thank Dale Zimmerman, Bruce Nicholas and the Franklin International Company for the program and for all of the Titebond and Titebond II glue samples that all members in attendance received.

DUES--DUES--DUES--DUES--DUES--DUES

Dues are now due for 1994, the Deadline will be the January 8th meeting. If you do not pay by this meeting your name will not be in this years roster and a name badge will not be ready with everyone else.

DOOR PRIZE--RAFFLE

We will raffle for \$1.00 per chance a Ryobi Detail Sander Model DS 1000 which retails for \$39.93. This is the triangular shaped sander. This is a little added money maker for the Treasury and a chance for a member to win a nice prize. If this month's raffle is successful we will do it monthly. So remember to bring those dollar bills for one or more chances. Art Chester was able to buy this sander from the folks at Home Depot at a reduced cost to the club.

DONATED BOOKS

Jacob Schulzinger who spoke to us last month on building your own library donated

two books to the clubs library--52 Weekend Woodworking Projects and The Art of Making Elegant Wood Boxes.

Denis Muras also donated to the library--Woodworker Essential Shop Aids and Jigs, The Small Workshop and Timber Frame House.

We would like to thank them for their Donations.

DELIVERY OF FOOTLOCKERS

Nothing like talking about delivery before we ever cut a piece of wood but if you are like me you work better on a deadline.

The people at Youth Harbour (Boys and Girls Harbour in La Porte have invited us to have lunch with them on Sunday February 23th at 1:30 P. M. when we deliver the Footlockers. We will need a count as to how many members will attend this luncheon. We will have a sign up sheet at the meeting, if you would like to attend and will not be at the meeting please call Art Chester and let him know.

PROBLEMS AND SOLUTIONS

How can you remove sticky varnish off cabinets. The varnish has gotten sticky from year of use--first use Mineral Spirits and if the Mineral Spirits do not remove the varnish add a little Turpentine to the Mineral Spirits and try again. Be careful with any solvent and work in a well ventilated room.

After years of cooking, kitchen cabinets can become dark, the best way to remove the dirt and grime--use Murphy's Oil Soap--Read the label as how to dilute it--the oil in the soap is vegetable oil and does not smell bad and easy on your hands.

SAFETY

By Zatis Murphy

Allergic reactions to certain woods can be aggravated by sweat/perspiration.

There is an article about dust in the current issue of Wood magazine.

You can also wear long sleeves--buttoned at the wrist. Gloves for sanding or barrier creams. Stay clean and use a non-abrasive soap.

When you are finished woodworking you can take a Benadryl tablet but be carefull Zatis said these tablets made him want to take a nap.

SHOW AND TELL

Ken Wallis experimented with some scraps of Corian and Maple to make stave bowls. He said he sanded off the High Gloss on the Corian before gluing to the wood. He also let the glue set up over night before turning on his lathe.

Ken also made a bowl of Purpleheart and Corian in a diagonal pattern.

Ken glued the Corian to the wood and then cut the angles on his tablesaw. All finished in Bartley's.

Ken says things dont work if you don't try.

We had a member show us a Jack plane that

he made and a plane to trim the edge of a guitar and a wedge for removing nails with a hammer.

Ed Smith made a couple of wooden nut crackers in the shape of the Christmas Nut Cracker Soldier. Ed got the plans out of Wood magazine, he carve the face and painted the nut cracker. Made all of the patterns out of Baltic Birch.

PRESIDENT'S CORNER

By Sharon Buckley

It does not seem like it but another year has bit the dust and the club starts its Eleventh year. I have been around since the beginning and have had a lot of fun and learned a great deal from the programs and from the members.

The programs that we have are informative and entertaining but the most to be gained is from the members themselves and the friendships.

We have many members that do a job every month without having to be asked and they get no pats on the back.

Every month Thad Brown picks up and mails out those newsletters--Thanks Thad.

Every month there is a group of members that arrive at the meeting at 8:00 and set up the chairs, tables, blackboard and microphones without anyone asking them--Robert Sandlin, Bill Hochmuth, Ed Smith and Denis Muras.

The folks that get that coffee made start at 8:00--Bill Hochmuth and Loretta Buckley.

We have Denis Muras taking care of the Video tape library and Bill Woods hauling around the book library, all we ask is that the members remember to return what they have checked out on time.

I would also like to Thank Mrs. Harper for making the fudge that everyone ate up at the December meeting.

You get out of a club what you put into a club, we are going to try some new things this year and we will only know how successful we are by the participation and the attendance of the members.

This is a list of the events that are already on the schedule for 1994:

1. January Program---Bartley's Finishes
2. February Program--Stanley Tools and Stanley Door Prizes.
3. Bar-B-Que-Demonstrations-Door Prizes
4. The Show--Woodworking Show at the George Brown Convention Center March 25-27, 1994.
5. Christmas Dinner Friday December 9th at the Rice Faculty Club.

Events that we are working on for 1994:

1. Field Trips to a Window Manufacturer
2. Field Trips to a Rocking Chair Maker.
- Members shop tours.

Art and I are open to ideas for programs, field trips and any suggestions that you might

have just please let us know.

A few years back we attempted the members shop tours but we never got it off the ground. I know quite a few members volunteered a tour of their shop and I would like to ask for volunteers again. There is alot to learn from the tiniest shop to the largest shop.

Last month in my haste to get the newsletter out I failed to wish everyone a safe and Happy Holidays and New Year. Well the Holidays are over and I hope everyone enjoyed them and Wish everyone a Great New Year.

BAR-B-QUE and WOODWORKING FAIR

This will be the first time that we have attempted a Bar-B-Que. Well since you can buy Bar-B-Que on any corner we wanted this one to be different. Not only will we have plenty of food and drink, we will have woodworking and non-woodworking demonstrations and door prizes all included in the cost of the Bar-B-Que.

WHEN: SATURDAY MARCH 19TH 12:00 NOON
RAIN OR SHINE

WHERE: SHARON BUCKLEY'S SHOP
Just Souteast of Hobby Airport

COST: \$8.00 PER PERSON

Because there will be woodworking tools in action we cannot have any children in attendance and we ask all that attend to bring hearing and eye protection.

We will have demonstrations on Handcut Dovetails and How to cut wood threads, Turnings on a Suitcase lathe, How to begin stave bowl construction, compound cuts on the bandsaw and many more, we will also demonstrate how to paint (Tole) on wood and how to paint on fabrics.

We will have door prizes for the woodworkers and the non-woodworkers.

We will have more information at the meeting.

JANUARY MEETING

WHEN: JANUARY 8, 1994 9:00 A. M.

WHERE: BAYLAND COMMUNITY CENTER
HILLCROFT AT BISSONET

PROGRAM: Jon Hall representative to The Bartley Collection and consultant to a wood products co. will answer the following questions on Bartley's Finishes:

1. Can I stain a large area with a gel stain?
2. How can I make custom colors with Bartley's gel stains?
3. How can I achieve a smooth lustrous finish with gel varnish?
4. Just what is paste filler and how do I use it?

This will be somewhat of an advanced seminar.

WOODWORKERS CLUB OF HOUSTON

1993 FINANCIAL REPORT

BANK BALANCE 1/1/93 \$2462.80

RECEIPTS

DUES	1993	\$1667.50
DUES	1994	\$ 846.00

TOTAL DUES	\$2513.50
ADVERTISING	800.00
FINES	20.00

TOTAL RECEIPTS	\$3333.50	\$5796.30
----------------	-----------	-----------

EXPENSES

NEWSLETTER & POSTAGE	\$2755.20
SUPPLIES	329.48
MEMBERSHIP ROSTERS	83.55
BANK SERVICE CHARGES	169.47
WOODFIND INDEX	74.95

TOTAL EXPENSES	\$3412.65	\$2383.65
----------------	-----------	-----------

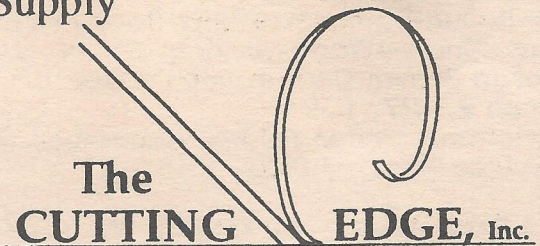
SPECIAL PROJECTS

1993 DINNER AT RAMADA INN		
RECEIPTS \$780.00	EXPENSES \$801.13	(\$21.13)
ORDER WOODFIND INDEX		
RECEIPTS \$90.00	EXPENSES \$90.00	-0-
STERLING PUBLISHING CO. BOOKS		
RECEIPTS \$205.09	EXPENSES \$204.45	.64
FOOTLOCKER PROJECT		
RECEIPTS \$2026.00	EXPENSES \$1787.85 TO DATE	\$238.15
1994 DINNER AT RICE	DEPOSIT	(\$100.00)

BANK BALANCE 12/16/93 \$2501.31

Houston's Most Complete Woodworking Supply

- Henry Taylor Carving & Turning Tools
- Woodworking Machinery by Jet, Bosch, Porter-Cable, Foredom, Suingo, Carba-Tec & Others
- Accessories, supplies, books and videos
- European & Japanese-Style Hand & Edge Tools
- Woodworking Instruction In Our 600 sq. ft. Shop



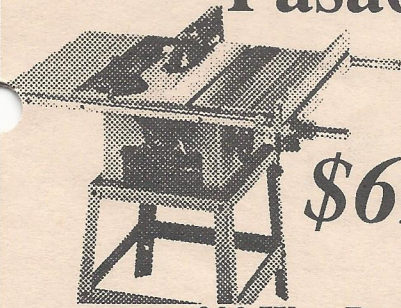
Woodworking Solutions®

12/94

Woodworker's Tool & Supply
7123 SW Fwy @ Bellaire Blvd. (713) 981-9228

Pasadena Industrial Supply

While They Last!



\$699

Delta 10" Contractor Saw special includes all the great features of their regular saw plus 2 cast iron extension wings, a carbide tip blade and a mobile base. Each saw is marked with a commemorative brass plaque on the front showing the issue number. Absolutely restricted to stock on hand. Delta# 34-444S 1-1/2hp 1125/230 volt

222 West Pasadena Freeway, Pasadena Texas 77506 472-5588



4910 West 34th St, Houston, Texas 77092

Hours: M-F 7:30-5:00 SAT 8:30-12:30

(713) 686-6176 Phone

(713) 686-3217 Fax

DOMESTIC & IMPORTED HARDWOODS

Ash, Basswood, Birch, Cherry, Mahogany, Maple, Red Oak, White Oak, Poplar, Walnut Etc.

High Quality Domestic & Imported
Plywoods, Softwoods, Hardwood Veneer

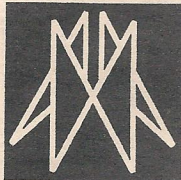
We've Moved

Please Visit Us At Our New Location

4910 WEST 34th STREET

(BETWEEN HWY 290 & MANGUM)

11/94



AUSTIN HARDWOODS

13001 VETERANS MEMORIAL DR.

HOUSTON, TEXAS 77014

440-0764

We stock over 80 species of lumber including rare exotics and turning stock. Plywood, Veneer, Moulding, Flooring, Tools, Millwork, Paneling Etc. also available

FM 1960

I-45

Bammel



2/94

WOODWORKING • UNLIMITED™

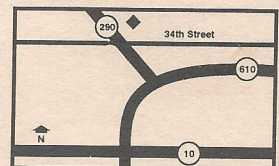
THE EQUIPMENT, THE TOOLS, THE ACCESSORIES, THE WOOD, THE HOW-TO INFORMATION, AND MOST IMPORTANTLY, THE ENCOURAGEMENT. THE WORKS.

Service
Selection
Quality
Value
Education

- ◆ **FREE** Woodworking Classes
- ◆ Frequent Shopper Discount for Wood
- ◆ Large selection of hardwoods & exotic woods
- ◆ Make your own sawdust - try out the equipment
- ◆ Expert advice and instruction



Mon-Fri: 10-8
Sat: 10-6
Sun: Noon-5



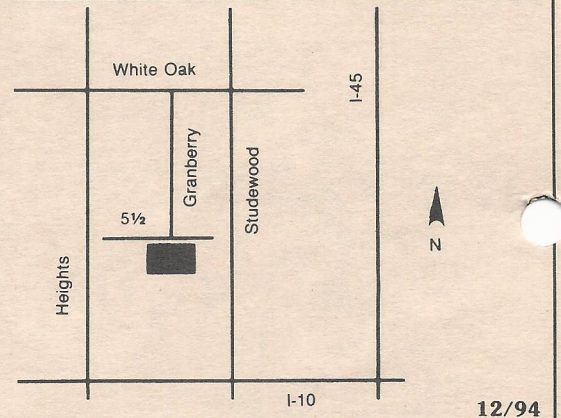
Northbrook Shopping Center
5360 West 34th St. • Houston, TX
(713) 681-5200

HARDWOOD LUMBER CO.

700 E. 51/2 St. (In The Heights)
Houston, Texas 77007
(713) 862-6628
Hours: M-F 7:30-5:00, Sat. 8:30-1:30

We stock over 65 species of lumber including
hard to find exotics!

*Also: Plywood, Veneer, Moulding, Formica,
Custom Milling, Woodworking Tools, Books, etc.*



Send Today for the Most Complete Catalog Selection of Woodworking Supplies

Please Enclose \$1.00 (3rd class) or \$2.00 (1st class)

Name _____

Address _____

City _____ State _____ Zip _____

Orders Shipped Within 48 Hours

7/94

The Woodworkers' Store[®]

21801 Industrial Blvd., Rogers, MN 55374

PRINTED BY SPEEDY PRINTING SERVICE OF TEXAS 3433 WEST ALABAMA, SUITE C • HOUSTON, TEXAS 77027 • 713-877-8466

Woodworkers Club of Houston
P.O. Box 34481
Houston, Tx 77234

