

Woodworkers Club of Houston

Volume 11, Number 7 July, 1995

June Meeting Notes

Hardwood Lumber has announced a 10% discount on all purchases for WwCH members. Take your cap.

Shirts are available for ordering. The price ranges from \$24 for Small to \$27 for the XXXXL. Jimmie checked with the supplier and we only need 20 total shirts for an order with six or seven shirts have been ordered to date. Lee is keeping the finances separate.

Problems and Solutions

Fred Jacobson is working on rebuilding garage doors. He is looking for the sets of router bits to match the various joints on the rails and stiles. From the membership it was noted that the different door makers use their own joint profiles and you may not find a match. Chuck Maxwell says that CMT has a very large selection of matching router bits for the joints. Their numbers are (800) 531-5559 or Fax (800) 870-7702. For the glue use a waterproof type like Weldwood's Resin Glue. It requires 24 hour set up so have lots of clamps.

A turner is using PEG to stabilize green wood but is finding difficulty in using finishes. The PEG is waxy and prevents usual finishes from penetrating or bonding. The suggestion is to stop using PEG and turn the pieces green. Be sure to finish the piece in one setup (Steve LeGrue's presentation) since the piece will change shape as it dries and you will not have a round piece to return on the lathe.

Another member brought up the problem of boring an 8' post for electrical wiring. The only suggestion was to rip the post, rout the wiring groove and lay in the wire, and glue the post back. The best way to cut the post would be on a band saw mill to minimize loss of wood.

Group Purchase Possibilities

Craig Jig < \$100 for groups > 50

Grip Tite Feather Boards

Rugged Buddy Sawhorses

Show and Tell

By Reed showed us his spalted turned vessel. He explained the spalting process and the need to have long heavy tools to turn deep vessels. Deep vessels require the cutting to be done a long way from the tool rest. The long tools need to be stiff and balanced, and the extra mass damps vibrations which cause chatter marks. Fun stuff, By.

Lee Palfreyman showed his Red Oak coffee table.

The plans are from Woodsmith Issue 80. The finish is 6 coats of Bartley's. Nice work, Lee.

Mike Turner showed his new design for a movable stand for the Jet contractor saw. He will be marketing them in the near future. Neat design, Mike.

Walt Turpening showed a walnut stool with flared legs and a woven seat using cotton cord. The design was inspired by a visit to the Southern Highlands Handcraft Guild shop Asheville, NC. where a number of rush woven stools are shown and sold.

June Program

The presenter this month was Greg Long who is a traditional Windsor chair maker specializing in the American style. 'Traditional' means using hand tools for all shaping steps except for the spindle turned legs and stretchers. He has taken classes from most of the well known instructors including Michael Dunbar. There are about 100 traditional Windsor chair makers in the US. There are basically 9 Windsor chair styles and Greg makes 7.

Historically, Windsor chairs were the chairs in the inns, pubs and taverns and not used in the dining rooms where Chippendale, Queen Anne and Hemplewhite were used. (However, today there are those like Thomas Moser that has taken the Windsor design and created fine furniture in cherry and ash. Moser, instead of steam bending the bow back, laminates to a form, claiming that it is stronger. -edt)

Since they were made with different woods the chairs were painted, usually a green (that became Windsor green) or black. To create an antique look Greg does distress some of his chairs and abrade the finished piece to give the worn appearance. The one completed chair he brought even had the upper high spots on the front and side stretchers worn to the wood. (Neat touch. -edt)

Greg told about the variations that were introduced in different regions of America during the mid-1700's. English Windsor chairs have vertical legs, the Americans introduced splayed legs that improved the stability and strength. The legs are through mortised into the seat with tapered tenons and wedged (the sign of a true Windsor) such that the legs don't turn. The mortises are all drilled with spoon bits and brace.

The seat starts as two 2" planks glued (no dowels) another American innovation to minimize warping. The carving tools used are scorps, compass plane, and hand planes. (no power grinders or carvers)

As with all traditional Windsor chairs, the back spindles and bowed back are from riven wood. Greg uses green Red Oak that he splits out by hand. The spindles he hand shapes in about 5 minutes each with drawknife and spokeshave. These are left long and extend up through the bow back, then cut off and wedged. Greg uses a traditional Conover wood handled spokeshave that has a flatter blade versus the usual Stanley/Record design that is just a short plane.

The back is steam bent to a form then when dry he augers the spindle mortises with spoon bits using a brace. The bow is held in the vise and the angles set by eye (guided by practice). The mortises in the seat are bored the same way. The taper is done with the brace and tapered spoon bit.

The legs and stretchers are riven green and turned. Greg uses silver maple that retains fine details of the turnings. The joinery are all green assuring solid construction.

Depending on the available woods of the region Windsor chairs have been made with:

Seat- Pine (traditional), Beech, and Mahogany

Legs- Maple or Hickory

Back- Hickory or Oak

Greg suggests going straight for the schedule 80 PVC pipe for the steam box, all others end up sagging with the high temperatures. Typically, the bow takes about 20 minutes to become damp and soft enough to bend to the form. The fact that the Red Oak is riven assures that there is no split out during bending.

Excellent presentation, Greg. Thank you very much.

From the President's Shop

At the board meeting on June 12th it was decided to try a different format to the meeting. Up to now we have had the libraries, raffle tickets and the treasurer available during the meeting. At times the discussions around these areas have been distracting and in some cases loud enough to make it difficult for some of the membership to hear.

So this month we will close the above mentioned services during the first portion of the meeting (through the Show and Tell). Then take a break for 15 minutes with the libraries, ticket, hat and shirt sales available and set up of the program, and then close during the program. The raffle will be at the end of the break.

South Pointing Compass

Remember Bob Pffnner's "South Pointing Compass", it is a scale model of a cart that is geared to always keep the pointer facing in one direction no matter how many turns are made. The original was used to aid caravans in crossing the Gobi Desert and thought to be the first use of gears.

Bob (and Clara) sent us a set of plans and an example of the gears. I will have it at the meeting for those who want to look at them. We can get copies made for those wanting to make one.

Sw Wood Guild

The guild met at Leonard Ekholm's home where he gave us a short tour of his small shop. Leonard spent a number of years making Texas craft items that he marketed through a number of craft stores here in Houston and at 26 craft fairs. Due to the small space everything has a place and there is a place for everything. For sawing he moves outside under their patio cover. A wonderfully laid out shop. Also he showed a number of examples of his craft items (all in a Texas theme) and some of his fine furniture.

The attendees were By Reed, Jerry Dalhgard, Terry McCafferty, Rob Overton, Bob Pffnner (visiting from St. Louis), Mike Turner, Walt Turpening and Leonard.

It was brought up that many times charity gifts are directed towards the children around Christmas. Terry noted that the Tulsa club also made items for the elderly. We decided to expand our projects to include domino sets made larger for those with arthritis, larger scale cribbage boards and foot stools. The foot stools will be three legged types and be different heights.

The next meeting will be July 16th.

July Meeting

- When:** July 8, 1995 9:00 AM
- Where:** Bayland Community Center
on Bissonnet at Hillcroft
- Program:** Dynamics of Wood, Don Richardson
- Raffle:** Brad Hartmann and Woodcraft Supply
are providing the raffle items this month

July Program The Dynamics of Wood by Don Richardson

Wood moves. As wood dries it shrinks and as it absorbs moisture it swells. Not only does wood move with these changes in moisture content, but it moves different amounts in different directions. In Don's program on the Dynamics of Wood we'll see how wood behaves as it moves. We'll see how these dynamics affect joinery in the things we make a how to make joints that are stable and strong. We'll even see some joints that actually tighten as the wood continues to cure.

Field Trip in July

Date: July 22, 1995
Time: 9:00 AM until whenever (not later than 1:00 PM)
Place: Hardwood Lumber Company
700 East 5-1/2 Street. (in the Heights)
There is parking in the rear and on the streets
around the building.

Bar-B-Q - September 16th

We will be having a barbecue much like last year's. This year, it will be held at the shop of Brian Owens and Jimmie Harp in the Heights. Right now, it will be on September 16. Jimmie is the chairman of this effort and he would appreciate any and all help you can provide him. In other words, all volunteers are graciously accepted.

For Sale

Excaliber Adjustable Dado - \$40
Contact: Lee Palfreyman 497-7085

Used 1/2" & 3/4" Galvanized Pipe - Free
Contact: Lynn Dillard 771-4520

Jet Table Saw Stand - \$25
Contact: Mike Turner 988-1485

Vice President's Bench Work

A decision was made at the Board of Directors meeting on June 12 changing the way the meetings are conducted. We will no longer conduct "business" during the meeting. Raffle tickets will be sold only before the meeting and during a break between the business meeting and the presentation. The same goes for the checking out of videos and books.

This is being done to allow the members and their guests in the audience to hear the proceedings and to show some respect to the guest speaker. There has been too much activity going on while the meeting is taking place. This is a change that should yield immediate improvement in your enjoyment of the meeting.

Also... we will not be spending as much time "selling" products during the business portion of the meeting. I will discuss any opportunities for group purchasing of tools and accessories before and after the meeting and during the break. There is a concern by some of the Board members that the meeting was getting a commercial appearance. The same thing goes for the ordering of T-shirts. All of this will be conducted only during the break and before and after the meeting.

Quote for the Month

Introduction to "The Workbench Book" by Scott Landis

In a turbulent modern world, the workbench is a reminder (real or imagined) of a time when men were measured by, in the words of the merchant John Wanamaker, "... the plumb of honor, the level of truth and the square of integrity, education, courtesy and mutuality."

August Newsletter Deadline: July 31, 1995

Officers		
President	Jimmie Harp	664-4906
Vice President	Saul Harris	341-5373
Sec'y/Treas.	Lee Palfreyman	497-7085

Services		
Book Library	Martin Imber	292-1606
Video Library	Denis Muras	943-7745
Literature Search	Don Richardson	661-1365
	Zatis Murphy	469-3563
Name Tags	Zatis Murphy	469-3563
Coffee	Loretta Buckley	944-6739
	Bill Hochmuth	774-1733

Directors	
Andy Anderson	723-1030
Art Chester	469-1990
Steve Procter	728-1459
Don Richardson	661-1365

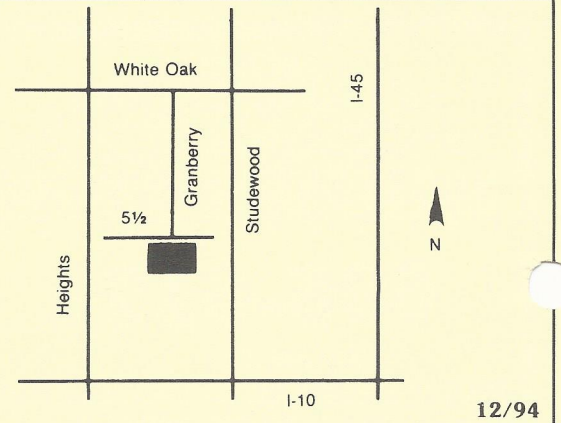
Newsletter Editor - Walt Turpening, 879-5640
Newsletter Distribution - Thad Brown, 522-8364

HARDWOOD LUMBER CO.

700 E. 51/2 St. (In The Heights)
Houston, Texas 77007
(713) 862-6628
Hours: M-F 7:30-5:00, Sat. 8:30-1:30

We stock over 65 species of lumber including hard to find exotics!

Also: Plywood, Veneer, Moulding, Formica, Custom Milling, Woodworking Tools, Books, etc.



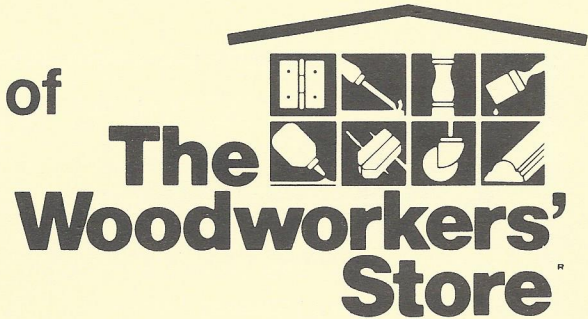
Send Today for the Most Complete Catalog Selection of Woodworking Supplies

Please Enclose \$1.00 (3rd class) or \$2.00 (1st class)

Name _____
Address _____
City _____ State _____ Zip _____

Orders Shipped Within 48 Hours

7/95



21801 Industrial Blvd., Rogers, MN 55374

The Lowest Prices On JET Machinery Every Day!

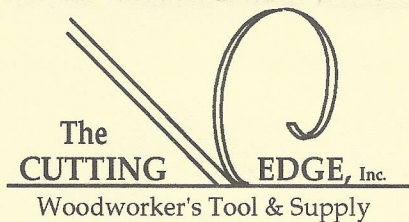
JWTS-10JF

- Contractor Style Table Saw
- Unique JET Fence
- Powerful 18A Motor
- Preferred by Wood & ShopNotes

For WwCH Members Only

\$549.95

7123 SouthWest Fwy, Just North of Bellaire Blvd. (713) 981-9228



Mon. - Fri. 9 am to 6 pm
Sat. 10 am to 5 pm
Sun. Noon to 4 pm

WwCH Membership

To Join the Woodworkers Club of Houston for 1995, bring this form to a regular meeting or send your dues to:

WOODWORKERS CLUB OF HOUSTON, P.O. BOX 34481, HOUSTON, TEXAS 77234

Make checks payable to Woodworkers Club of Houston.

Renewal Membership \$24.00

New Membership is prorated if 1st year is less than 1 year.

WwCH Membership Form

Last Name _____ First Name _____

Address _____ Spouse's Name _____

City _____ Home Telephone _____

State _____ Zip _____ Work Telephone _____

Renewal Membership \$ _____ New Membership \$ _____



686-6176

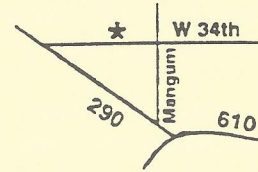
FAX: 686-3217

4910 West 34th St, Houston, Texas 77092
Hours: M-F 7:30-5:00 SAT 8:30-12:30

DOMESTIC & IMPORTED HARDWOODS

Ash, Aspen, Basswood, Birch, Aromatic Cedar, Cherry, Cypress, Lacewood, Mahogany, Maple, Oak, Padouk, Pecan, Poplar, Purpleheart, Redwood, Sycamore, Teak, Walnut and more.

- *Quality Domestic & Imported Plywood (Interior & Marine)
- *Edgebanding & Veneer
- *Butcher Block Tops
- *MDF & Melamine
- *Moulding
- *PERSONAL SERVICE
- *PROMPT DELIVERY
- *ON-SITE CUSTOM MILLING

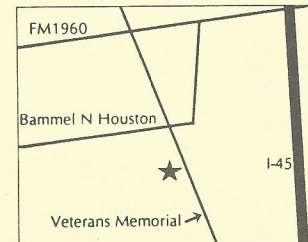


AUSTIN HARDWOODS

13001 Veterans Memorial Dr #408

- Rare Exotics - over 80 species in stock
- Turning Stock / Veneers / Dowels
- Flooring / Moldings / Plywoods
- Finishing Supplies
- Millwork & Woodwork available including Custom Profiles
- Custom Knife Grinding Services
- Project Hardware

2/95



440-0764



WOODCRAFT® Your Most Complete Woodworking Store!

Hand & Power Tools
Sanding & Scraping
Planes
Cabinet Making Supplies
Vises & Clamps
Saws

Carving Tools & Chisels
Wood Boring Tools
Woodburning
Woodturning
Project Kits & Supplies
Shop Accessories
Books & Videos

Hardware
Finishing Supplies
Safety Equipment
Sharpening Supplies
Workbenches
Picture Framing Tools
Classes

Routers & Accessories
Hardwoods & Exotics
Marking & Measuring
Power Tool Accessories
Files & Rasps
Clock Supplies



WOODCRAFT®

Woodworking Tools ■ Books ■ Supplies ■ Since 1928

Woodcraft ■ Northbrook Shopping Center ■ 5360 West 34th Street
Houston, TX 77092 ■ Phone: 713-681-5200
M-W & F: 9AM-7PM ■ TH: 9AM-9PM ■ Sat.: 9AM-6PM ■ Sun.: Noon-5PM

Pasadena Industrial Supply

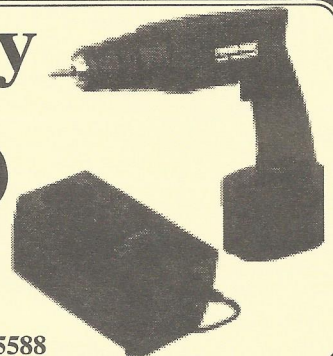
Porter Cable #9853S 12V Cordless Drill Kit

- Adjustable clutch 10 to 230 in. lbs.
- Two speed ranges: 0-350 & 0-1,000 RPM
- Variable speed, reversing
- Extra battery
- Includes steel carrying case

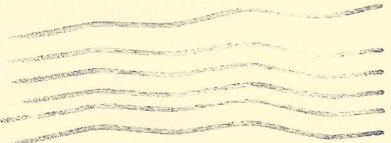
Must Show Ad
Prices Good For Club
Members Only

\$159

List \$330



222 West Pasadena Freeway, Pasadena Texas 77506 472-5588



Woodworkers Club of Houston
P. O. Box 34481
Houston, TX 77234

Printed by: *Speedy Printing Service of Texas* 3433 West Alabama, Suite C • Houston, Texas • (713) 877-8466

Woodworkers Club of Houston

Up Coming Meeting Speakers and Presenters

- July 8th —** Don Richardson, "The Dynamics of Wood"
- August 12th —** Steve Procter, "Casegood Construction"
- September 9th —** Walt Turpening, "The Principles of Custom Design"
- October 14th —** Southwest Wood Guild, "Christmas Projects"
- November 11th —** Open
- December 9th —** Open