

Woodworkers Club of Houston

July 2004 • Volume 20, No. 7 • www.wwch.org

Some thoughts from Ken Kooser, past president of WWCH and current board member.

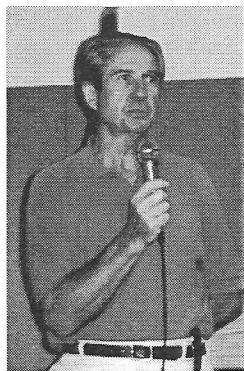
Judging from the monthly count, 50 to 70 of you are missing each meeting. Come on, its too hot to work in the shop anyway. We would like to visit with you.

The club received a nice letter from an early member, H.B. Blankenship, who now lives in Onalaska, Texas.

H.B. sent us copies of the WWCH newsletters from 1984-85. Interesting to me was that the club had nearly 100 members then. That was back when Houston was a small town.

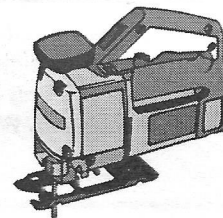
Twenty one-club members (1984) took advantage of a workshop on making workbenches (cost the builders \$300 for wood, vice and all). Dr. Bill Forkner and Michael Chandler, with the University of Houston, both conducted programs. Some meetings were held in the University's Technology building. Interesting stuff. One of the issues has a drawing of a jig designed by Chuck Maxwell.

The June meeting was fun, with some excellent show and tell items. Our problems and solutions session was very interesting. After the break Mr. John McInnis from the Bayfield Corporation gave a short talk about the lines of woodworking products he represented. He offered the equipment for trial by the members after his presentation. He was very generous with door prizes.



Your board of directors voted to give out a door prize at certain meetings. This month Joe Rice won the Ryobi Sander. Your President and this writer cooked up the scheme to give tickets to members wearing their name badge. Wearing your badge is something that needs to become a habit. It helps us to get to know who we are. We will try other schemes so everyone is eligible for the door prize.

David Meyers and this writer are planning to go to Atlanta for the IWF2004 show. This is the grand poo-ba of woodworking machine shows. August 26 -29. Look up www.IWF2004.com for more details. Andy Anderson plans on going with me so there are two seats available in the Cadillac. Dave says he also can accommodate riders. Contact Dave or Ken.



WANTED: Writer for WWCH Newsletter. If you have writing skills and like to see your work in print the Editor of this newsletter would like to talk with you. Become a part of the exciting and fast-paced world of print communications! You will work with the Editor to plan and write articles that will appear in the newsletter. You can even work from home! This is a strictly voluntary position but the perks are... well ... there aren't many of those either. So, do it for the glory, do it for the club, do it for Mom and apple pie. Contact Bill White: 713.524.8768 or bwhite444@houston.rr.com

It was another big month for donations again. We got almost 20 books from Morris Reinisch. In this donation were several **How To** books from Sunset Books, a nice one by Craftsman so, if you have some Craftsman tools, this is a must to check out. It has every hand power tool that Craftsman makes. There are a couple of books on country woodworking and painting that are full of good information. Speaking of information, we have a 500+ page book called the **Encyclopedia of Furniture Making**.

Add this donation to the others that were given to us at the last meeting to the huge donation that we got last month, we have over 350 very good references for almost anything that would involve wood.

The bookcases are full.

In some cases we have more than one copy. This is good when the book is popular, however we have repeats of some that are rarely checked out. Also, there are some books in our outstanding collection that may never be checked out. **Modern Furniture Projects** from 1962 is not very popular.

We talked about this at the last board meeting and thought that it would be a good idea to place these books up for sale or best offer. The money raised will go back into the library. This may become a regular monthly event. There will be a box for donations and fines and a small selection of books on top of one of the bookcases.

Although we have a large selection of some fine woodworking books, we still need the ones that are checked out to be returned. So look around, and remember that it is only a small \$2 no mater how long it has been checked out. We want our orphans back.

John Gay, Books

Club Classifieds

SALE: Jointech Sawtrain Upgrade for the Shopsmith (model 500).

This system will turn your Shopsmith into a precision tool with the capability to make adjustments as small as 1/1000th of an inch. I recently bought a Shopsmith model 520, sold my 500 model and bought the Jointech system for the 520.

This package retails for \$1243.65 new. I have had this system for approximately two years. All parts are in excellent condition. There are a few places where normal use has rubbed the finish but there is no damage to any of the parts. I will accept payment by check but will not deliver until the check clears.

The package includes:

6 piece CabinetMaker's System

Retrofit Kit

Floating Table Package

Includes all users manuals and assembly instructions. The system (new with description) can be seen at the Jointech web site (<http://www.jointech.com/shopsmith500&510.htm>).

Price: \$750 plus shipping. I am willing to meet a buyer approximately half way between Houston and San Antonio to deliver for \$25.

This package sells for approximately \$950 at woodworking shows.

If interested contact:

Leonard

830-779-2262

publix@earthlink.net

SALE: Poplar

ART: 281 379-1783

SALE: 52" Unifence Setup

Includes complete fence/tube assembly, right extension table, legs, and lower shelf, and mobile base extension for Delta mobile base.

Taken off of a 1998 Unisaw. The melamine/particle board extension table has a cutout for a Mast-R-Lift (9 - 1/4" x 11 - 3/4") and a miter slot but could easily be replaced with a new top.

Moved to a smaller space and replacing with shorter fence.

Would prefer to sell complete but might part out. Digital pictures available. \$325

Steve Ulrich: 713-862-1551

SALE: Getting out of woodworking and am selling the bulk of my hand and power tools. I'll be happy to provide a PDF copy of the list via e-mail on request.

Jacob Schulzinger

7910 Twin Hills

Houston, TX 77071-1325

Phone 713-776-9063

Fax 713-772-0381

SALE: Parks 12" Planer

1963 model, a real workhorse. \$450. Houston area; will not ship.

Extra set of knives and manual/repair parts list are included.

Todd Burch: 281-828-5506

SALE: 20 rough sawn slabs of walnut, 30+ years aged, 1.5" by 4" by 8 feet or so. Dimensions vary. Makes beautiful finished trophies, etc. Price? I don't know; let's chat. Fair is all I ask.

Scott: hubba1@kingwoodcable.net or 281-360-9646

SALE: Hardwoods

Quartersawn/Rift Sawn 4/4 Hardwoods

Red Oak, Pecan, Red Elm \$3/bd ft

Jack Hutchison: 281-493-2633

SALE: Lotsa Pine - Must Sell!! Approx. 4,500 board feet of air dried, local cut yellow pine for sale. \$0.80/a board foot, any quantity.

Boards are either 8' long or 12' long. Random widths. Thicknesses from 4/4, 5/4, 8/4 and 12/4. Most are thicker than 4/4, but @ 4500/bf, there's still a LOT of 4/4. Some boards over 20" wide.

Nothing thinner than 6". Average width is probably 9" - 10". First come, first served. Can deliver for a nominal charge. Houston / Katy delivery. Tell me what you want and you don't even have to go to Montgomery to pick it out - I will!

Todd Burch: 281-828-5506

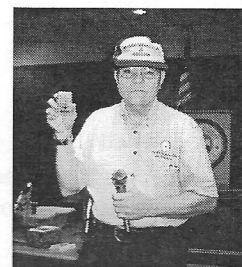
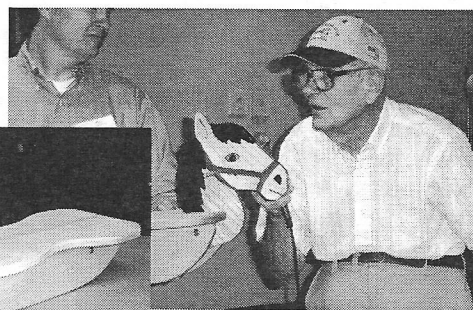
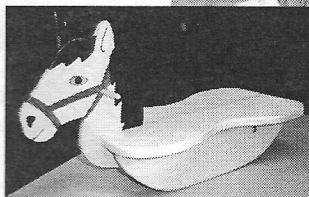
Note: This Club Classified section was taken from the Club's website. The items listed were chosen and edited to fit the space available.

June projects

Dan Shaklovitz did not try to demonstrate how to ride this rocking horse that he made for his two new grandkids.

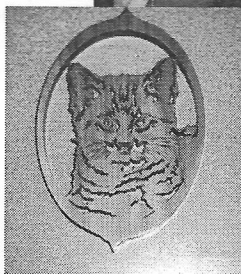
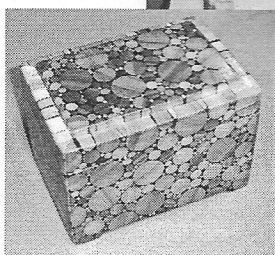
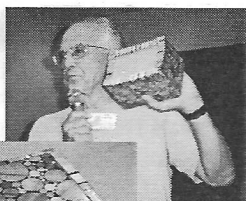


Giles LeGrue shows a futon that was made of quartersawn red oak. The futon is topped with three coats of wipe-on poly.



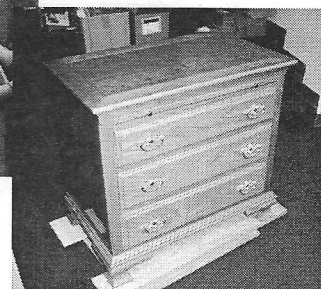
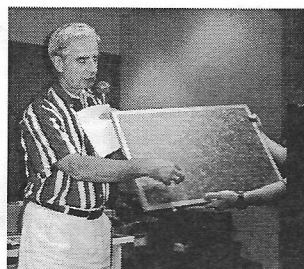
This "microphone", held up by **Robert Sandlin**, was one of many that he constructed of scraps to sell at a craft show.

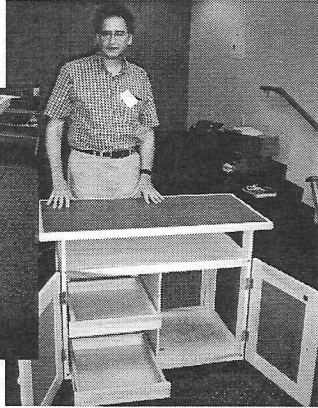
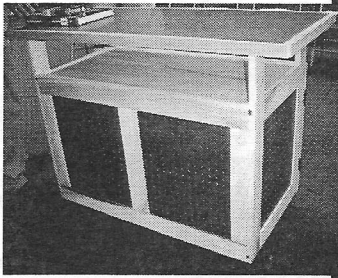
Lon Kelley glued together several dowels then filled the spaces with marine epoxy.



This red oak cross was scrollsawed by **Ron Adams** from a six inch wide piece of red oak. The cat face was also scrollsawn just purrrrrfectly from a piece of cedar picket fence.

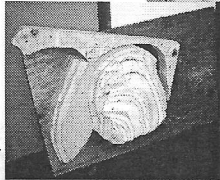
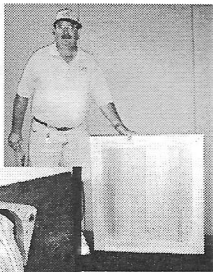
Monte Richard proudly displayed his chest of drawers made of cherry. It's frame and panel construction with MDF for sides. Drawer bottoms are of baltic birch. To create an old finished cherry look, Monte used a base of boiled linseed oil followed by orange shellac topped by a coats of varnish rubbed between applications.





Ed Rubenstein rolled in this shop cart that he built from a Woodsmith magazine design. The cart is made of polar with birch on the lower shelf. Ed used tools purchased from club members to make the cart.

Denis Muras stands by his top half of a Dutch door of cypress rails and stiles. The stiles are pulled securely to the rails by drilling alignment holes that are slightly offset. When a tapered peg is inserted, the taper forces the holes to align, thus snugging the stile up to the rail. This is a technique used in timber frame construction.



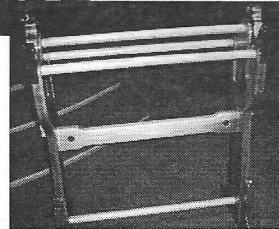
The bottom photo is of an armature for constructing the eye of a tiger for an eight foot high tiger head he's building for Sealy High School. The armature will support pieces of wood to create an intarsia effect.



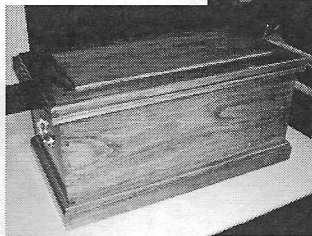
Marcus Brun shows his domino holder of mahogany for use with double 9 tiles.



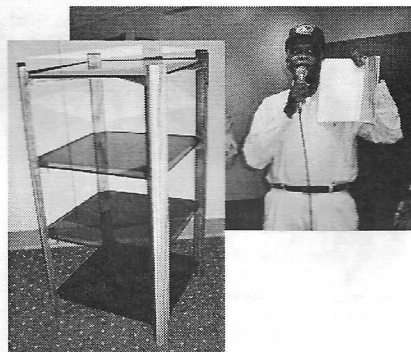
Glenn Edwards talked about his quilt rack of red cedar that he made for his wife. It easily dismantles for portability by unbolting the middle I-beam. He finished it with wipe-on poly saying that it need three or four more coats.



Jack Hutchison talked about this toy box of red gum that he built for his grandson. It is patterned after an 18th century jointer tool box. It has a



floating panel top with a one inch molding around the edge. Jack finished it with a coat of Minwax red oak stain followed by a polyurethane varnish.



Linzie Rogers shows members the article from Woodworker's Journal, his design source, for this tiered table of red oak and glass.

Current Work photos & text by Gary Rowen

Club Contacts

- Jim Robertson, *President* [REDACTED]
- Walter Mason, *Vice-President* [REDACTED]
- Gary Rowen, *Secretary* [REDACTED]
- Al Morrow, *Treasurer* [REDACTED]
- Ken Kooser, *Director* [REDACTED]
- Paul Koury, *Director* [REDACTED]
- Tom Matkin, *Director* [REDACTED]
- Mike Kelly, *Director* [REDACTED]
- Gary Rowen, *Webmaster* [REDACTED]
- Joe Edelen, *Name Tags* [REDACTED]
- John Gay, *Book Library* [REDACTED]
- Blaine Stokes, *Video Library* [REDACTED]
- Loretta Buckley, Bill Hochmuth, *Coffee Committee*
- Bill White, *Communications Director and Newsletter Editor* [REDACTED]



Brandle's Sawmill

Rough Sawn Pine and Hardwoods

Custom Sawing

Logs up to 33" X 24'

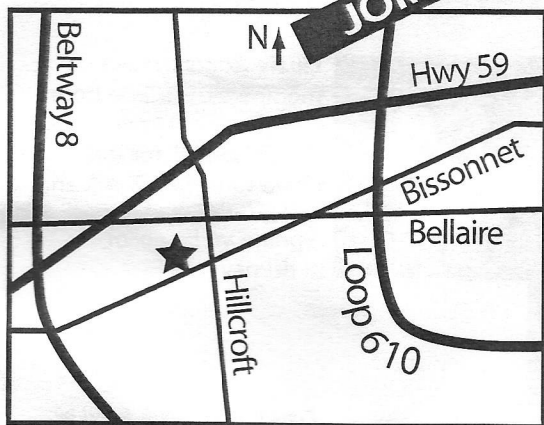
13868 Lakeland Drive
Montgomery, TX
77356

936. 597.4575
(Call for Directions)

WWCH Monthly Meeting

Second Saturday of every month
We open the doors at 8:30am, program starts at 9:00 and winds up by 11:30am.

Bayland Community Center
6400 Bissonnet
Houston, TX 77074



Woodworkers Club of Houston Membership Application



A WWCH Membership is a chance to learn about woodworking, visit with other woodworkers and see some fabulous projects. Your membership includes a monthly newsletter, access to our video and book library, invitation to field trips and occasionally we collectively buy tools at discounted prices. Considering the cost it's a genuine bargain. So, cut out this application, include a check for \$24.00 yearly membership and mail it to the address below. And join us once a month for a good time.

Name _____

Address _____

City _____ State _____ ZIP _____

Phone () _____

Mail To:
WWCH Membership
502 Aurora
Houston, TX 77008

\$24⁰⁰ A bargain!

PRECISION WOODWORKING TOOLS FOR ROUTER TABLES AND TABLE SAWS

JOINTECH

Ultra-Precision Woodworking Systems

- **Combination Router & Table Saw Fences**
Micro Adjustable, Accurate to 1/1000 of an inch
- **Router Tables, Table Saw Extension and Floating Infeed/Outfeed Tables**
Available in Solid Phenolic or Melamine
- **Complete Table Saw Upgrade Systems**
Available for virtually all Cabinet & Contractor Saws
- **True Zero Clearance Miter/Cutoff Sled**
Micro-Adjustable, Positive Detents Every 1/2 Degree
- **Table Mounted Router Lift System**
Raise & Lower a Router with 1/1000 of an inch precision
- **And Much More...**

Jointech Routing Center



**Award Winning Tools
from Jointech, Inc.**



CALL FOR YOUR FREE CATALOG!

1-800-619-1288

or visit us On-Line at: www.jointech.com

Starting winter of 2004, Jointech will open the doors to its first Woodworking Academy for all woodworkers. Classes will range from basic woodworking techniques to advanced cabinet making. Be sure and go on-line to see the latest information posted.

Authorized Dealer For:

**GENERAL
INTERNATIONAL**



Specializing in quality hardwoods, plywoods and moulding since 1990.

Select your own wood from our supply of Birch, Mahogany, Maple, Padouk, Teak, Walnut and much more.

- Domestic and Imported Plywood
- Edgebanding and Veneer
- Butcher Block Tops
- MDF and Melamine
- Moulding

Houston Hardwoods has built a reputation for personal service, prompt delivery and on-site custom milling. Come by and meet our friendly staff or visit us on the web at www.houstonhardwoods.com



4910 West 34th St, Houston, TX 77092
 Tel: 713. 686. 6176 • Fax: 713. 686. 3217
 M-F: 7:30 - 5:00, Sat: 8:30 - 12:00



Circle Saw Builder's Supply, Inc.
Circle Saw Shop of Houston, Inc.

2510 ELLA BLVD. • CORNER WEST 26TH ST. • HOUSTON, TEXAS 77008

CONTRACTORS AND BUILDERS TOOLS AND SUPPLIES

- MAJOR BRAND TOOLS
- PNEUMATIC NAILERS
- STATIONARY TOOLS
- CHAIN SAWS & SUPPLIES
- WOOD WORKING TOOLS
- PORTABLE TOOLS
- SHARPENING SERVICES

(713) 864-8444 • FAX (713) 864-6014 • www.circlesaw.com

JOINTECH WOODWORKING ACADEMY

Starting this Summer - our Woodworking Classes will involve full, hands-on instruction for woodworkers at all levels. Instruction in joinery, cabinet making, furniture and much more. Space is limited so CALL (800) 619-1299 / (210) 377-1288 to reserve your place in an upcoming class!!

Note: These classes are held at the JoinTech store in San Antonio. Call number above for directions.

Every Monday (morning)**Woodshop Machines Course**

Length: 4 hours Class Size: 10
Hands On? NO \$55

Every other Monday (afternoon)**Router Techniques 1**

Length: 4 hours Class Size: 10
Hands On? YES \$75

Every other Monday (afternoon)**Bandsaw 1**

Length: 4 hours Class Size: 10
Hands On? YES \$75

Every Tuesday**Using the Jointech CabinetMaker's System**

Length: 8 hours Class Size: 10
Hands On? YES \$130

May 5 & 19; June 2, 16 & 30 (morning)**Mastering Miters**

Length: 4 hours Class Size: 8
Hands On? YES \$65

May 5 & 19; June 2, 16 & 30 (afternoon)**Making a Mitered Box**

Length: 4 hours Class Size: 6
Hands On? YES \$65

May 20; June 24; July 29**Dust Collection Basics**

Length: 4 hours Class Size: 10
Hands On? NO \$75

June 5 - 6; June 26 - 27; July 17 - 18**Introduction to Cabinetmaking**

Length: 2 days Class Size: 6
Hands On? YES \$295

LEARN WOODWORKING AT THE CUTTING EDGE

All classes are held in our woodworking shop located in the store at 11760 S. Sam Houston Pkwy W., Houston, TX.

Phone: 713/ 981-9228

Mon. - Fri. 9-6 · Sat. 10-5 · CLOSED Sunday

Free Saturday Tool & Technique Workshops:

11:00 a.m. to Noon-Unlimited Attendance
(Topics subject to change. Call for more information)

June 26: Japanese Hand Tools: Learn how these beautiful tools can work for you.

July 3: Sharpening Basics: Learn how to put an edge on all your tools for peak performance.

July 10: Router Basics: Learn how this versatile tool can be put to work.

July 31: Table Saw Basics: Tune your saw for optimum performance. Learn to cut with confidence.

August 7: HVLP Basics: Learn the ins and outs of spray finishing with the latest equipment and finishes.

August 14: Milling Basics: Learn how to mill a board square using the jointer, planer & table saw.

August 21: Bench Plane Basics: Learn how to tune your bench and block planes to give you a great cut.

August 28: Mortise & Tenon Basics: Learn the many ways to cut this most important furniture joint.

September 4: Woodturning Basics: Join Steve for a celebration of the fastest growing area of woodworking.

FIRST MONDAYS: Co-sponsored by the Gulf Coast Woodturner's Association and The Cutting Edge to promote woodturning, we host an informal "turn-in" the first Monday of each month. Bring your tools, your questions and some wood, as there will be several lathes going all evening. 7-9 pm. FREE!

Woodworking Instruction in the Chisel & Gouge Studio:

Call 713/981-9228 for current offerings and to sign up.

Woodworkers Club *of Houston*

11319 Atwell Drive
Houston, Texas 77035



MARK YOUR CALENDARS:



WWCH Monthly Meeting: July 10

Next Monthly Meeting: August 9



Woodworkers Club of Houston • www.wwch.org • Meeting Second Saturday of Every Month

The Cutting Edge offers only the finest woodworking tools and supplies.

Come visit and see our new and expanded store. We've kept all the best lines of supplies and equipment and added lumber and a few other surprises. We're still committed to providing the best sales and service in the Houston area. You won't be disappointed.

- Woodworking Machinery
- Turning Tools and Supplies
- Carving Tools
- English Hand Tools
- Japanese Hand Tools
- Lumber from around the world
- Monthly Woodworking Classes

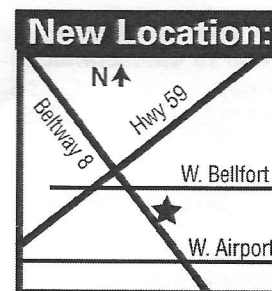
JET

POWERMATIC

DELTA®

**Best Prices on JET
Machinery Every Day!
Authorized JET Service
Center**

See our web site for our
monthly list of classes and
much more:
www.cuttingedgetools.com



11760 S. Sam Houston Pkwy W.
713. 981. 9228

The
CUTTING EDGE, INC.
A Woodworker's Tool & Supply