

Woodworkers Club

OF HOUSTON

VOL 10, No. 3

MARCH, 1994

Officers

Sharon Buckley - President 944-6739
Art Chester - Vice President 469-1990
Steve Procter - Sec./Treasurer 728-1459

Board of Directors

Bud Froelich - 859-6620
Jimmie Harp - 664-4906
Ted Kurland - 729-4693
Joe Wainright - 666-8475

Sharon Buckley - Newsletter Editor 944-6739

FEBRUARY MEETING

Our program was presented by Lou Schamble of Stanley Tools. He started out by showing us a video tape on the Contractor Grade Tools. Lou also handed out a catalogue to all the members describing the various tools in the contractor grade. These contractor grade tools carry a full lifetime warranty.

Lou had a sample of many of the tools on hand, he explained the difference in the large assortment of knives that Stanley sells.

While Lou was explaining the planes, saws, tape rules, layout tools, jacketed hammers, good hammers, wood chisels and rubber grip screwdrivers he was passing out Stanley baseball caps.

Lou explained the difference between the Mahogany levels and the Aluminum levels and how easy and accurate it is to change the break resistant acrylic vials.

No our Wood levels are not flat--the following is their explanation---When placed on a flat surface, light can be seen underneath the center of the level. the slight curvature is an important part of the process of creating a properly functioning wood level.

The curvature is known as "hollow grind", and is created in the manufacturing process to ensure that when the level is placed on a masonry surface, it will rest on its ends, and not rock back and forth in the middle, as it might do if the edge of the level were perfectly flat. This results in a more accurate reading.

Another reason for the hollow grind is in the nature of the wood itself. Over time, wood will gain or lose moisture content, resulting in small dimensional changes. By creating a slight curvature, we are able to compensate for these changes--in fact, Stanley chose mahogany for our levels because of its exceptional dimensional stability over a variety of temperature and humidity conditions.

Be assured that by including this extra step in our manufacturing, we are producing a

better product.

Lou also explained the many different types of tape rules. The difference between a powerlock and a leverlock tape rule. He demonstrated a tape rule that is readable from both sides of the tape (the numbers always facing up) and a tape that has a top reading on the case for inside measurements. The tape rules have a heavy duty Mylar "blanket-wrap" coating that extends blade life up to ten times longer.

Steel and Aluminum Squares have a black body with etched scales filled with yellow paint for superior readability. The surface is protected to resist corrosion.

Lou and Stanley Tools donated some very interesting products to be given away as Door Prizes. We had so many that it was hard to keep track as to who won what. Some the prizes were saws, chisels, screw drivers, various tape rules, an assortment of knives, plumb bob and chalk, drink coolers, drink thermos, panel carriers, magnetic belt clip for your tape rule, telephones and cassette players in the shape of a Powerlock Tape Rule and a Mahogany level.

Not only was the program informative and interesting some members got some great prizes.

We would all like to Thank Lou Schamble for a fun program and to Stanley Tools for all of the great gifts.

B. B. Q. LUNCH AND WOODWORKING FAIR

This is the final call for all those interested in some fun, food and a good time, to get that registration in. The last day that you can pay for the B. B. Q. will be this meeting March 12th. After Saturday no more money will be accepted--remember its \$8.00 per person.

Sign up sheets and maps to the location were in last month's newsletter--if you need a sign up sheet or map some will be available at the meeting.

We have some interesting demonstrations planned and most will allow the members to try a little hands on if they would like.

We also will have demonstrations for the ladies--wood painting (Tole) and fabric painting--T-shirts, jackets, etc.

Door prizes are included in the price. we will have door prizes for the woodworkers and the ladies.

Tables and chairs--we will have plenty of tables to chow down on but we only have a limited number of chairs--if you can bring a chair it will guarantee you a place to sit.

Parking ---if you can car pool with someone from your side of town it would help. We have limited parking in front of the shop, some cars can park in the back depending on the weather, you can also park along side of Wayfarer St. since this is a Saturday there is very little traffic.

Right now we have about fifty-two members and guests signed up--don't forget this meeting is the Deadline.

PRESIDENT'S CORNER

By Sharon Buckley

The footlockers have been completed and delivered. What was really fun was to watch the kids and their excitement.

When we arrived we saw only one boy on the telephone, in no time it looked like ants coming out of everywhere to unload the footlockers.

The boys really were thrilled to receive the boxes, some so small it took one boy on each end to carry a footlocker. A couple of the boys could just get their arms around the footlocker but couldn't move and didn't want to put the footlocker down.

They disappeared just as fast to start filling those footlockers with their personal belongings.

It was really worth all of the work, time and money that the members put into the footlockers just to see the excitement that it brought to these kids.

A job well done.

I would like to thank Gale Towns who saved us almost \$200.00 dollars by allowing us to buy the hardware for the footlockers at his wholesale cost. Gale is a member and is manager of Berings Hardware at Bissonet and Weslayan.

At the January Board meeting it was suggested that we try something similar but maybe on a smaller scale. We as a club could use our woodworking skills to make things for other groups. We could do most anything or we could make toys in our shops for Toys for Tots or the Salvation Army, etc. put on your thinking hats and if you have any ideas or suggestions its something that we can work on in the coming months.

DUES---DUES---DUES

If your receiving this newsletter you have already paid your dues for 1994.

After recapping our expenses for 1993 we are spending more money than we are taking in.

The Officers and Board of Directors determined that the dues would have to be raised a little to make up the difference.

It was presented to the members and they voted to increase the dues to \$24.00 per year for any new members joining and for any old members joining after the March 12th deadline.

Since the majority of members have already paid their dues for 1994 it will not affect you this year.

This only makes your dues \$2.00 a month what can you get these days for \$2.00. I know that every month I get more than \$2.00 of information out of each meeting.

With this increase we will also be able to buy some more video tapes for the library, which we were unable to do last year.

SAFETY DRILL PRESSES

By Zatis Murphy

Always tighten all of the holes on the drill chuck with the chuck key. A very important item is not to leave that chuck key in the chuck as it can cause serious injury if you start spinning that chuck before removing the chuck key. Delta makes a chuck key with a spring in it that makes the key eject itself.

Always clamp the work to the drill press table especially if you are drilling metal.

When drilling round or cylinders, first cut V grooves slots in a piece of scrap, place that round object on the grooves and then drill.

Zatis passed out some drill press speed charts--the bigger the bit the slower the speed, speed also depends on what you will be drilling.

Zatis made a storage cabinet that he found plans for in Woodsmith, the plan is for a bench type drill press, Zatis adapted it for use with his floor model drill press, by putting casters on the cabinet he can store it under the drill press table and when he needs to drill something where he has to lower the table he just rolls the cabinet out. This gives him storage and a table to place his bits and drill chuck key.

The problem with all Drill Press tables is that they are made for drilling metal. The tables are just too small to drill wood. Woodsmith also had plans in that same issue for a larger table and fence.

It is not recommended to use a drill press for router operations, the drill chuck is not designed for side way thrust that occurs when using router bits.

One member suggested making a handle for the long end of the chuck key as it will give you more torque.

SHOW AND TELL

We had only one member this month to bring any show and tell items. Come on fellas bring some of those items that you are working on to the meeting we would like to see them.

Lewis Vallette brought one of his turned stave bowl creations. It consisted of 6 kinds of wood and 144 pieces.

1994 BOOK CATALOG

We have received new catalogs for 1994, you can check out a catalog for a month. There are some new titles for 1994, it also includes books on woodworking, woodturning, chip carving, home repair, doll houses and stain glass. Remember we get a 40 percent discount and free shipping if we purchase 6 books. Steve Procter has the catalogs if you would like to order some books.

SHOP TOURS

We have two volunteers to organize the shop tours in the coming months, Marilyn Lewis 463-2859 and Monte Laramore 422-3362, we will have a sign up sheet at the meeting if you would like to put your shop on the shop tour.

FEATURE PROJECT FOR MARCH

This month's feature project will be anything related to Easter. You can make almost anything---it can be religious or just for fun.

MARCH TOOL RAFFLE

We will have a door prize at the March meeting--so get your dollars ready --please have some change on hand if you would like to take a chance at the raffle. Someone asked if you could buy more than one ticket--yes you can buy as many tickets as you would like.

MARCH MEETING

WHEN: MARCH 12, 1994 9:00 A. M.

**WHERE: BAYLAND COMMUNITY CENTER
ON BISSONET AT HILLCROFT**

PROGRAM: Bud Froelich will present a program on his portable lathe that he uses at craft fairs to demonstrate how he turns Wooden pens, pencils and wine stoppers.

If you have any questions on how to get started in the Craft fair business, Bud can give you some pointers on what and what not to do.

SEE YOU THERE!!!!!!!!!!!!!!!!!!!!!!!!!!!!

Houston's Most Complete Woodworking Supply

- Henry Taylor Carving & Turning Tools
- Woodworking Machinery by Jet, Bosch, Porter-Cable, Foredom, Sugingo, Carba-Tec & Others
- Accessories, supplies, books and videos
- European & Japanese-Style Hand & Edge Tools
- Woodworking Instruction In Our 600 sq. ft. Shop

Woodworking Solutions®

12/94



**The
CUTTING EDGE, Inc.**

Woodworker's Tool & Supply

7123 SW Fwy @ Bellaire Blvd. (713) 981-9228

WOODWORKERS CLUB OF HOUSTON BAR-B-QUE AND WOODWORKING FAIR

FOOD DOOR PRIZES DEMONSTRATIONS FUN

**ALL YOU CAN EAT BAR-B-QUE AND ALL THE FIXINGS
COFFEE, TEA AND DESERT**

**WHEN: SATURDAY MARCH 19, 1994 12:00 NOON
WHERE: SHARON BUCKLEY'S SHOP RAIN OR SHINE
SOUTHEAST OF HOBBY AIRPORT
MAPS WILL BE PROVIDED**

COST: \$8.00 PER PERSON

**DOORS OPEN AT 11:00 A. M. FOOD LINE STARTS AT NOON
DEMONSTRATIONS START AT 1:00 P. M.**

DOOR PRIZES FOR WOODWORKERS

DOOR PRIZES FOR THE LADIES

**WOODWORKING DEMONSTRATIONS
(HEARING AND EYE PROTECTION WILL BE REQUIRED)**

NON-WOODWORKING DEMONSTRATIONS

DEADLINE FOR RESERVATIONS MARCH 12TH, 1994

**FOR SAFETY REASONS NO CHILDREN WILL BE
ALLOWED**

**SINCE THIS IS THE FIRST YEAR THAT WE ARE ATTEMPTING THIS
BAR-B-QUE WE REALLY NEED TO GET EVERYONES MONEY AS
SOON AS POSSIBLE !**

MEMBERS NAME _____
SPOUSE/GUEST _____

X \$8.00 PER PERSON = \$ _____

Pasadena Industrial Supply *Super Close Out Specials*

Thousands of dollars of slow moving material, power tools, and junk sold below cost. "Sold as is" while supplies last.

Come get it while we got it!

222 West Pasadena Freeway, Pasadena Texas 77506 472-5588



4910 West 34th St, Houston, Texas 77092

Hours: M-F 7:30-5:00 SAT 8:30-12:30

(713) 686-6176 Phone

(713) 686-3217 Fax

DOMESTIC & IMPORTED HARDWOODS

Ash, Basswood, Birch, Cherry, Mahogany, Maple, Red Oak, White Oak, Poplar, Walnut Etc.

High Quality Domestic & Imported
Plywoods, Softwoods, Hardwood Veneer

We've Moved

Please Visit Us At Our New Location

4910 WEST 34th STREET

(BETWEEN HWY 290 & MANGUM)

11/94



AUSTIN HARDWOODS

13001 VETERANS MEMORIAL DR.

HOUSTON, TEXAS 77014

440-0764

We stock over 80 species of lumber including rare exotics and turning stock. Plywood, Veneer, Moulding, Flooring, Tools, Millwork, Paneling Etc. also available

2/94

FM 1960

I-45

Bammel



WOODWORKING • UNLIMITED™

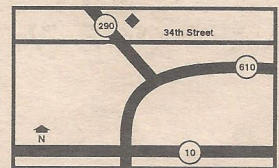
THE EQUIPMENT, THE TOOLS, THE ACCESSORIES, THE WOOD, THE HOW-TO INFORMATION, AND MOST IMPORTANTLY, THE ENCOURAGEMENT. THE WORKS.

**Service
Selection
Quality
Value
Education**

- ◆ **FREE Woodworking Classes**
- ◆ **Frequent Shopper Discount for Wood**
- ◆ **Large selection of hardwoods & exotic woods**
- ◆ **Make your own sawdust - try out the equipment**
- ◆ **Expert advice and instruction**



Mon-Fri: 10-8
Sat: 10-6
Sun: Noon-5



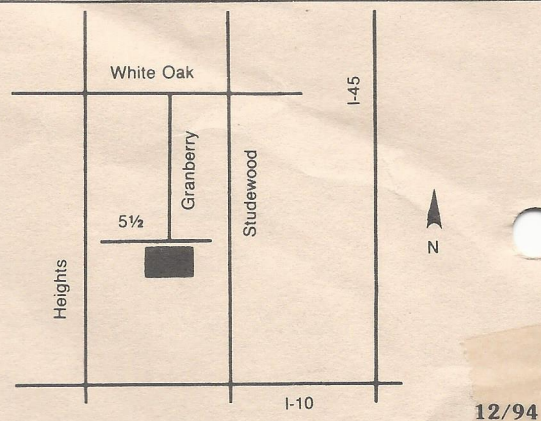
Northbrook Shopping Center
5360 West 34th St. • Houston, TX
(713) 681-5200

HARDWOOD LUMBER CO.

700 E. 51/2 St. (In The Heights)
Houston, Texas 77007
(713) 862-6628
Hours: M-F 7:30-5:00, Sat. 8:30-1:30

We stock over 65 species of lumber including
hard to find exotics!

Also: Plywood, Veneer, Moulding, Formica,
Custom Milling, Woodworking Tools, Books, etc.



Send Today for the Most Complete Catalog Selection of Woodworking Supplies

Please Enclose \$1.00 (3rd class) or \$2.00 (1st class)

Name _____

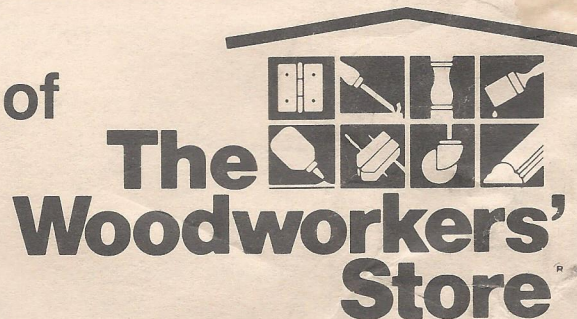
Address _____

City _____ State _____ Zip _____

Orders Shipped Within 48 Hours

7/94

21801 Industrial Blvd., Rogers, MN 55374



PRINTED BY SPEEDY PRINTING SERVICE OF TEXAS 3433 WEST ALABAMA, SUITE C • HOUSTON, TEXAS 77027 • 713-877-8466

Woodworkers Club of Houston
P.O. Box 34481
Houston, Tx 77234

