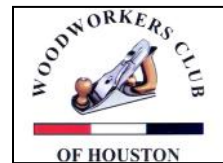


# The Sawdust Sentinel

Monthly newsletter of Woodworkers Club of Houston



Volume 39 Issue 3 March 2022

## Inside this Issue

WWCH Calendar .....	p. 1
President's Message.....	p. 1-2
Monthly Toy Challenge .....	p. 2-3
Program of Month.....	p. 3
Club Announcements .....	p. 3
Show and Tell .....	p. 3-5
Vendor Ad .....	p. 6
WWCH General Information .....	p. 6

## WWCH Calendar

Monthly Meeting .....	12 Mar
Scroll saw Meeting .....	23 Apr
Hand tool Meeting .....	26 Mar
Furniture Meeting .....	TBD

## Splinter Groups

Scroll Saw Splinter group: Norm Nichols  
([scrollsaw@comcast.net](mailto:scrollsaw@comcast.net))

Furniture/Finishing Splinter group: Ron Kirchoff  
([kirch76@gmail.com](mailto:kirch76@gmail.com))

Handtool Splinter group: Mark Bolinger  
([marksmbth@gmail.com](mailto:marksmbth@gmail.com))

CNC Splinter group: Bill Teague  
([wateague@gmail.com](mailto:wateague@gmail.com))

## 2022 WWCH Board

<b>President</b>	Peter Doe
<b>Vice President</b>	Michael Siegel
<b>Secretary</b>	Chris Farquhar
<b>Treasurer</b>	David Janowitz
<b>Publications Director</b>	Sankar P

### DIRECTORS

Chris Schwartz, Gael Golden, Tom Paulley, Dorsey Rushing

## MESSAGE FROM THE PRESIDENT

First, it was great to see the turnout for last month's meeting. I think it was our largest attendance since pre-Covid and is hopefully a sign that we are moving to more normal times. The program highlighting things our own members have done is also something we plan to continue through the year. There's a lot of expertise in the club, and sharing it is a major part of the mission.

In other news, we have secured a location for the planned all-day July meeting and are working on identifying a presenter.

Harris County still has the Covid threat level at orange, based on the number of ICU beds occupied, but all trends are still moving in the right direction.

Which brings me to: Journey of a Woodworker Part 2.

My woodworking education part 2 produced a piece that we still use. Here is what it looks like today.



It was built as a stereo/LP cabinet. The slightly higher left hand section was originally about 8 inches higher than at present – in effect it had a shelf that held the amplifier and the record player sat on top.

LPs were stored vertically inside the doors.

If you remember, I was not happy with the staining of my first project(s), so I opted to build this out of cherry and cherry plywood to get the color I wanted – except that cherry was expensive. So I had this brilliant idea that I would build the internal

## MESSAGE FROM THE PRESIDENT (Cont..)

frame out of inexpensive lumber and cover it so that it looked like the whole thing was made of cherry.

So off I went to the local lumber yard and bought some pine for the innards. I did my best to mill it with my limited tool and skill set and built the frame. None of the pieces of wood was truly square, so the finished frame was not truly square. During construction, my cheap lumber never seemed to stay the same.

shape from one day to the next. Starting over was not an option, so I went ahead anyway with the cherry 'veneer' – actually about  $\frac{3}{4}$  inch thick – glued to the outside of the pine frame. There are places all over the finished product where pieces don't quite match up, but it looks OK from across the room.

If you notice from the photograph, the top is tiled. Susie's dad was a woodworker and he had made a few pieces with tile tops. We liked the look, so I made this piece that way. The woodworking on this project was pretty sub-standard, but I was very pleased with the tiling, and it has held up well to the present day.

But time and technology move on, and the time came around 1990 when we no longer had any LPs, but we did have CDs. So I re-built the inside of the right hand section to hold drawers full of CDs. Figuring out how to fit two banks of CDs (in drawers) into the space originally intended to hold one 12" LP was an interesting challenge. I did not want to use side mount drawer slides because they wasted too much space, and a conventional bottom mount did not work because there would not be enough vertical room for two drawers.



My solution is in the second picture. A split drawer bottom, with the slide positioned between the two parts, and recessed into the drawer front and back to reduce the overall height of the drawer. This is not perfect, but it works well enough. You can also see in the picture that there was no room for a drawer pull, so I used a Forstner bit to drill two angled holes for a finger grip. Works great. The final modification came when I needed more CD space, so I cut off the top of the left hand section, shortened the sides, glued the top back on and made more drawers.

So what did I learn from this project? First, I really like working with cherry. I have not used it much lately, but it remains one of my favorite woods. Apart from a tendency to burn (a bit like maple) if your tools are not perfectly aligned and sharp, it really has no flaws as far as I am concerned. Second, forget about trying to save money with cheap wood – on projects you care about, the savings don't amount to much a few decades later, and the extra work it involves is instant negative feedback.

More next time.

**Peter Doe**

**WWCH President**

## Monthly Toy Challenge

**Monthly Toy Challenge – You could win \$500 worth of stuff!**

**February Challenge:** Puzzles. Andy Tofuri, Bill Harris and Norm Nichols presented their entries for the competition.



**March Challenge** - A toy with moving parts (Example would be Charles Volek's pull toy Ducks or Grasshoppers).

Monthly Challenges for next 2 months:

April – An item specifically for girls (historically they are "underserved" by our huge supply of cars).

May – A toothbrush holder. This should be painted or finished to withstand water. (New toothbrushes and a small tube of toothpaste will be provided for each copy at the Toy Sorting event in November).

A document covering how the Toy Challenge works and guidelines for the challenge is posted in the WWCH website ([WWCH Toy Challenge](http://www.wwch.org)). Stay tuned for updates and keep checking the website for updates and changes to the toy challenge.

Members suggestions for Monthly Challenges to fill in the blanks are welcome. Send your ideas to Andy Tofuri ([andy.tofuri@comcast.net](mailto:andy.tofuri@comcast.net)).

## Toy of the Month

A link to the Toy of the Month file can be found on the WWCH Web Site

<http://www.wwch.org>

## Program of the Month

**Program Name:** *Veneering - Peter Doe*

There are various ways to apply veneer to a substrate. For big pieces, though, a vacuum veneer press is hard to beat. Peter will give a quick overview of his attempts at veneering over the years, and will finish with a demo of how it works using a vacuum bag.

## Club Announcements

2022 WWCH membership card and directory will be available for pickup for members during the March meeting.



# Show and Tell

Scratch Awl from Sycamore. — **Mark Bolinger**



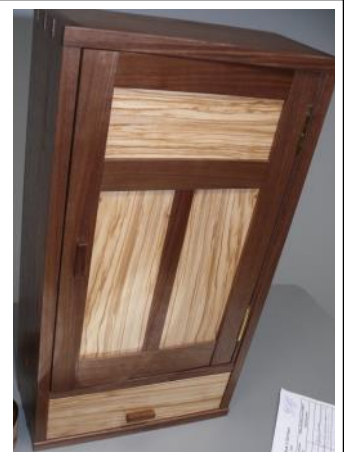
Four bowls, one of maple and three of walnut. — **Dan Schmoker**



Four-outlet box and desk light, both of pine. — **Mike Turner**



Walnut and olivewood wall cabinet, based loosely on a design by Mike Pekovich. The dovetail and through tenon joinery are hand cut (mostly). The back is shiplapped walnut slats, and has a French cleat for hanging. The door closes with a ball catch. The interior is finished with shellac, and the exterior with Osmo Polyx-oil. — **Mike Hardy**



Wooden animals of Plywood. — **Denis Muras**



Tree. — **Bill Harris**



# Show and Tell

I made a few heart shaped boxes from a Steve Goode pattern. The bodies are about 1-1/2" maple and the top and bottom are 1/4" white oak. The white oak are from a winery, we think they were used in a wine press.

I made a few mirrors using a beveled edge ~4-3/4" diameter mirror, they are ~11" + long. I used maple, walnut and some kind of African reddish wood.

Mesquite bowls, the large bowl is ~8" the smaller bowls are ~3-1/2", all are ~2" deep. The two lighter bowls are finished with a semi-gloss lacquer and the darker one gloss lacquer.

— **Dave VanDewerker**



My scrap pile overflowth! To eliminate some I decided to do a bandsaw box. Pieces of like thickness were laminated together, sanded flat, stacked, and glued in layers. Two coats lacquer topped with two coats hard wax. Drawers lined with Flockit. — **Norm Nichols**



Boxes of Mesquite. — **Hugh Parker**

Platter, wands, bottlestoppers, and ice cream scoops. Projects made of Osage orange, pomegranate, mesquite, pear, blackwood, and mahogany. — **David Janowitz**

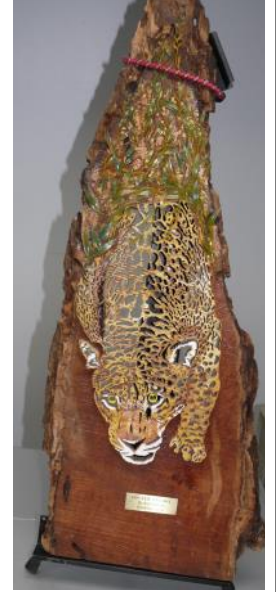




# Show and Tell



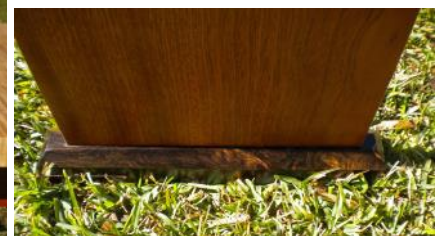
US Navy plaque and scroll sawed jaguar, mesquite and an unknown species. — **Rick Spacek**



Scroll saw trivet of mahogany and gentleman's chest of oak. — **George Graves**



Table of curly maple, blackwood, and mahogany. — **David Janowitz**





# WOODCRAFT®

Helping You Make Wood Work®

All WWCH Members receive a  
**\*10% discount**  
on qualifying purchases

*\*See store for details some exclusions may apply*

Houston North

235 Cypress Creek Parkway

281-880-0045

Or

Houston Southwest

11707 S. Sam Houston Pkwy W

281-988-9449

## WWCH General Information

### WWCH BOARD OF DIRECTORS

#### OFFICERS

President	Peter Doe
Vice President	Michael Siegel
Secretary	Chris Farquhar
Treasurer	David Janowitz
Publications Director	Sankar P

#### DIRECTORS

Chris Schwartz, Gael Golden, Tom Paulley, Dorsey Rushing

### COMMITTEE CHAIRS AND CLUB SERVICE PROVIDERS

Book Library	John Gay
Donuts	Roslyn Hager
Club Logo Items	Norm Nichols
Membership Book	Patti Page
Newsletter	Sankar Padhmanabhan
Raffle	Andy Tofuri
Refreshments	Steve Wavro
Technology	Denis Muras
Web Master	Gary Rowen

### NEXT MEETING

**Saturday 12<sup>th</sup> March (9am—12pm)**

**Bayland Community Center**

**6400 Bissonnet St, Houston, TX 77074**

<http://www.wwch.org>

**Newsletter Publication:** Do you have an announcement or item for the newsletter? Send it to Sankar Padhmanabhan, WWCH Newsletter Editor, at [sankarnkp@live.com](mailto:sankarnkp@live.com). Please submit the item before 1st of each month to be included in the newsletter

***We're on the web!***

[www.wwch.org](http://www.wwch.org)

**Join our FacebookGroup!  
Woodworkers Club of Houston**

**WWCH PURPOSE:** The Woodworkers Club of Houston is a group of men and women of all ages and skill levels who promote, educate, and share the craft of woodworking. The club meets the second Saturday of every month from 9-11:30. Guests are always welcome at no charge. Membership dues are \$36 per year, or about the price of one good clamp!