

Woodworkers Club of Houston

Interesting Facts about Wood:

The world's tallest living uncut, decorated Christmas tree is a Douglas Fir (*Pseudotsuga menziesii*). It is approximately 160 foot tall, lighted with over 50,000 LED lights and is located in Blue River, Oregon USA. To date, the world's tallest cut down and decorated Christmas tree was a 212 foot Fir used to celebrate the Christmas of 1950 in the city of Seattle, WA.

Volume 28 Issue 12

December 2012

Inside this issue:

President's Message	1
In Memoriam	1
2013 Board Nominations	1
Calendar & Kudos	2
Splinter Groups	2
Craft Show Recap	3
November Show and Tell	4&5
November Speaker Recap	6
Texas Woodworking Show	6
Wonder of Woods	7
Caps and Shirts	8

In Memoriam

Dan Shaklovitz, 93, of Friendswood, Texas passed away peacefully on Monday, November 26, 2012.

Dan was born in Bay City, Texas on December 18, 1918 and served in the U.S. Army Air Corps. during World War II. He was a welder during most of his working life and retired from Brown & Root in 1985. After retirement he devoted much of his time to wood-working and was a long-time member of the Woodworkers Club of Houston.

Dan is survived by his wife of 72 years, Eileen Shaklovitz; sister, Dorothy Cusick and husband, George Cusick; sister-in-law, Norma Shaklovitz; son, Robert Shaklovitz; daughter, Susan Thomas and husband, Jim; son, John Shaklovitz and wife, Pam; son Paul Shaklovitz and wife, Colleen; and numerous grand children.

Condolences may be sent to the Shaklovitz Family in care of Jeter Memorial Funeral Home at www.jeterfuneralhome.com.

MESSAGE FROM THE PRESIDENT

I feel that 2012 has been a successful year for the club. I have enjoyed being the Club President and wish to thank all of the club officers and board members, and you, the members for all your support. We enjoyed some great programs and a very successful picnic. This has only become possible because of the help that has been given in the past.

I know I can count on all members to support the incoming officers and board members. Please step up and volunteer to help them this coming year. The club is nearing its 30th anniversary.

When you look back at the many items that have been exhibited at Show and Tell over those years, you can see the great talent that our members have. And it just keeps getting better.

As you meet people throughout the month, please invite them to come and be a part of this amazing and talented group. It is your club and only through your interest and support can we continue to attract other talented woodworking craftsmen.

Again, thank you for the opportunity to serve such a wonderful group.

Andy Anderson, President

Oh, Santa told me to let you know that Club membership dues makes a great stocking stuffer!!

BOARD CANDIDATES FOR 2013

Lon Kelley, chair of this year's nominating committee, presents this slate of candidates for election to the 2013 WWCH Board of Directors.

Additional nominations can be offered from the floor by the membership at the December 8th meeting. Be sure to attend the club meeting and vote and lend your support to our new officers.

Steve Proctor	-----	President
David Garcia	-----	Vice President
Chuck Meeder	-----	Secretary
Larry Page	-----	Treasury
Directors at Large	-----	John Sears, Bob Wink, and Jerry Harmsen

ALSO, THE WOODWORKER OF THE YEAR WILL BE ANNOUNCED.

DECEMBER SPEAKER – STEVE WAVRO

The December speaker will be **Steve Wavro** talking on the fascinating process of intarsia –the art and craft of assembling different shapes and species of wood in a bas relief (low relief) panel format to create a picture, a landscape or other scene. Steve is a long time member of the club and was Vice President last year. He has brought many examples of his work to Show and Tell and has won many awards for his finely crafted intarsia plaques.

SPLINTER GROUPS

Page 2

CRAFT SHOW IN MISSOURI CITY



The first ever **Craft Show for WWCH** drew a lot of interest, conversations, and customers! Thank you, members, for the help and the donations of your creations for the support of the club. Andy Anderson chats with a show organizer. Bill Harris and Jerry Harmsen stand by ready to help pack up unsold items to return to their owners.

The toy cars drew a lot of attention, as did the can crusher! The various designs of crosses and Christmas ornaments were popular with the show attendees. And even the Grinch was represented in the Angry Birds plaques. Good Show!!!



Even Angry Birds!



Conjecture ran high on just what this contraption was. Everybody who passed had to pull the handle and make it work and leave an opinion. Could it be a hamburger press, a nutcracker, a bottle cap flattener, or just a whatchamacallit.

Then out came a soda can, and the "Oh, yeah's...." and a lot of laughter.

NOVEMBER SHOW AND TELL

PRESENTERS

1. **Mark Behring**—Toy Airplanes
2. **D.L. Dickey**—Box
3. **John Gay**—Tool
4. **Jeremy Grubb**—Crafting a Table
5. **Denis Muras**—Toy Caboose
6. **Josh Nichols**—Workbench
7. **Fred Sandoval**—Three-legged Stool
8. **Charlie Sembera**—Can Crusher
9. **Rick Spacek**—Scrollworked Cross and Woodburned Scene
10. **Bob Wink**—Mobiles and Lamp
11. **Everett Woodlum**—Music Stand

Rick Spacek woodburned a woman's memories of her childhood farm onto a piece of the old barn's wood. What a treasure.
He scroll sawed this cross in some found wood—Honduras Mahogany.



Everett Woodlum created this adjustable music stand of walnut cut at his father's farm. designed it with removable legs for easy transport to his daughter in Vermont. What a beautiful heirloom.



D.L. Dickey shows one keepsake box of the nine that he made for each of his nine granddaughters. Made of padauk and maple, D.L. used a JoinTech to make the artistic joints.



Fred Sandoval put the scraps of poplar and red oak from his Irish chair to good use on this very stable, square-seated, three-legged stool.

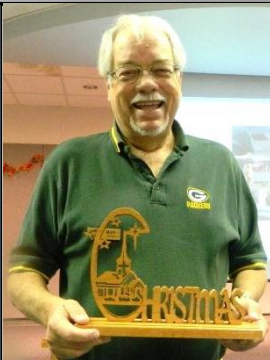
Bob Wink's teepee lamp is made from a skin he found at a craft fair and installed on a tramp art base. *Truly electrifying, Bob.*

His series of Texas A & M mobiles, made of found objects and Bob's imagination and talent, certainly would be great conversation pieces. Talent aptly displayed in the skeleton gloves he made and presented to Andy Anderson!



NOVEMBER SHOW AND TELL

Mark Behring's beautiful ornaments will grace his Christmas tree this year. They are made of poplar, plywood, and other woods from Sue Mey designs. For the backing Mark used acrylic paint and a spray polyurethane. His pursuit of the many pieces of various woods led him to a less expensive wood, Verola, like a fine grained Honduras Mahogany and golden pecan.



Jeremy Grubb presented slides on the making this award-winning table from concept of tapered, bent lamination legs, to drawing, to execution in a Bradford Pear wood saved by the City of Pasadena. Of course calling it a table is like calling a mansion a cottage. You can see Jeremy is passionate about his work.

John Gay entertained club members by demonstrating how his giant screwdriver of red oak could turn giant wooden screws—and it DID!

The handle has a secret compartment for storing the different bits (*and other components of screw drivers, ahem!*). The top of the board and bits are magnetized to store securely so they don't go rolling away. Now what will John make to top this one.



Josh Nichols presented a slide show of his progress in making a fantastic workbench of maple and mahogany with hand cut condor tails, sliding deadman, 1/2" split top for tool storage and a gap stop. Since the workbench weighs 300-400lbs he hasn't moved it yet.



Denis Muras's cabooses are looking for a tow. Crafted in cherry and black walnut you can see the interior through windows that let you see inside. They will be fine gifts for his grandsons.



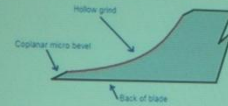
Charlie Sembera shows off this "Crusher". It sure was a hit at the Craft Show. He could have sold tickets! All who passed it couldn't resist trying their hand at pulling the lever.

NOVEMBER SPEAKER RECAP – MARK BOLINGER

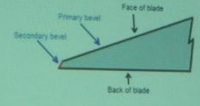


Mark Bolinger presented a slide show about techniques for sharpening plane blades. Something so seemingly simple is so technical and so important. Mark stated that having sharp tools is 75% of the success when using hand planes. Two types of strategies were presented by Mark: hollow grind and secondary bevel. Mark also emphasized the point that you must flatten the back of the blade and further stated that for those who resist flattening the back should "get over it". For the bottom of the plane Mark rub on only a non-silicon paste wax.

Two Strategies for Sharpening



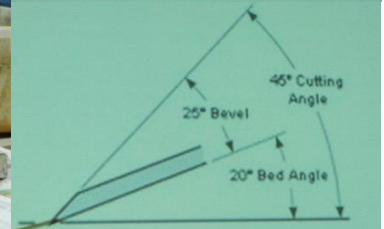
- Use a hollow grind for bevel down planes.



- Use a secondary bevel for bevel up planes.



Bevel Up



TEXAS WOODWORKING SHOW—Bears Repeating

SAVE THE DATE - PLAN AHEAD April 12 – 14, 2013

The Houston / Gulf Coast Woodworkers Show will be held at the Pasadena Convention Center, April 12-14, 2013. In addition to the normal woodworkers trade show, this year's show will include a student competition and a marketplace where handcrafted products will be offered for sale. The Woodworkers Club of Houston has been very involved with the planning of the show. Volunteers from the club will be assisting to insure that our vendors are well supported. Texas Woodworking Show, LLC is the new promoter and has offered complimentary booth space for the Club as well as other clubs and guilds. Response from vendors and artisans is very strong, and it looks as if this show will be larger than previous shows in the Houston area.

This show offers a unique opportunity for each of us to see the **latest and newest products and tools**. As an ongoing component of the show, there will be **seminars and demonstrations** designed for all levels of woodworkers, from beginners to the most advanced. **National and international guest lecturers**, along with some of our own members, have been recruited to provide current information and advice during the show. Including **The Crazy Canadian** who will be conducting seminars throughout the show.

The **Student Competition** is an exciting new feature this year. Teams of up to 3 students per team will develop Ready-to-Assemble products in their classes and then will bring them to the show for the public to vote and decide "Best of Show". All entries must fit in a box that is 24" X 36" and 12" deep. The product must be assembled in 1 hour. We hope this competition will attract a new generation of woodworkers, so please plan to attend the show and **vote for your favorite entry**.

Having a **Marketplace** where craftsmen and craftswomen can **display and sell** their products is also a unique addition to the show. The cost of a booth for the 3 days is \$100 and if you are interested or if you know someone who might be interested, please contact Tim Shaunty with Texas Woodworking Shows, LLC.

The show will be a 3-day event, April 12 – 14, 2013

10:00am – 7:00pm on Friday and Saturday

1:00am – 5:00pm on Sunday

Admission price for the entire 3-day show is \$10 for everyone above the age of 12.

For more information, visit the website: www.texaswoodworkersshows.com

Mark your calendar and plan to enjoy this unique show.

MEMBERS, Tim Shaunty needs help in contacting woodworking TEACHERS whose students will participate in the student competition at the Texas Woodworker's Show. Please contact Tim with the names of the teachers or any schools you know that have woodworking programs. Students should be encouraged to continue their interest in woodworking, and what better way than to have fun doing it! We need to inspire a new generation of woodworkers, so let's not leave any school uninvited.

THE WONDER OF WOODS

The **oldest workable wood/lumber** on earth is Ancient Kauri (*Agathis australis*). The trees from ancient forests on North Island, New Zealand have been buried under peat moss since the last ice age. They are well preserved and are now being dug up from the tundra. They have been radio carbon dated to approximately 30,000 - 50,000 years old. Of course, 50,000 years is the ultimate limit of radio carbon dating so it is quite possible that these trees could be older!

It is estimated that the trees were growing approximately 12 - 20 centuries before they were buried by the ice. Some of the trees have a circumference of approximately 40 foot and heights of almost 200 foot. The Ancient Kauri trees are native to New Zealand and are not found anywhere else in the world. The wood/lumber from these trees **can be purchased** from, Ancientwood, LTD. Each piece of Ancient Kauri wood/lumber purchased comes with a Certificate of Authenticity.

The **world's longest solid wood/lumber board** (no lamination), is a piece of Ancient Kauri. It is approximately 40 foot in length and has an estimated worth of \$100,000.00.

The **world's largest living tree**, by volume, is the General Sherman Giant Sequoia (*Sequoia gigantea*), located in Sequoia National Park, in California. It has a trunk volume of approximately 52,500 cubic feet. It is believed to be approximately 2,100 years old. It is a little over 102 foot 7 inches in circumference. Its largest branch which broke off in January 2006 was 6 foot 9 1/2 inches in diameter. At 180 foot above the ground, its trunk is still 14 foot in diameter. It is estimated that it contains 600,000 board foot of lumber. Its trunk by itself, weighs approximately 2,800,000 pounds.

The state with the **most registered national champion trees** (largest of a particular species) is Florida with 163.

NEW ROUTER TABLES



NEW! PRO PHENOLIC DESIGN!

Dual track

Larger stand

Shown with optional stand

Pro Phenolic Router Table Package

- Includes Pro Phenolic router table, Pro Fence with dust port and plate
- Solid 3/4" Phenolic for incredible strength and durability

Starting at **399⁹⁹**
With stand **\$499.99**



NEW! HIGH PRESSURE LAMINATE DESIGN

Dual track

New finished edge banding

Larger stand

Shown with optional stand

High Pressure Laminate Router Table Package

- Includes HPL router table, fence with dust port, plate
- Miter Track and T-Track combo expands your options for different setups

Starting at **249⁹⁹**
With stand **\$349.99**

ROCKLER®
WOODWORKING AND HARDWARE
Create with Confidence™

Holiday Sale starting 12/1 - 12/28/12
3265 Southwest Fwy. • Houston, TX 77027 • (713) 622-6567 • Rockler30.com
Store Hours: M-F 9 am-7 pm • Sat 9 am-6 pm Sun 11 am-4 pm

782 Maler Rd.
Sealy, TX 77474

NEXT MEETING

NOVEMBER 10, 2012

9AM TO 11:30AM

BAYLAND COMMUNITY CENTER
6400 Bissonnet

Speaker:
Steve Wavro
Intricacies of Intarsia

CONTACT US

Now on Facebook too:

www.facebook.com/pages/Woodworkers-Club-of-Houston

We're on the web!

wwch@wwch.org

VOTE!

BOARD OF
DIRECTORS FOR
2013

BALLOT INSIDE

NOMINATIONS
FROM THE
FLOOR

VOTE AT THE
DECEMBER
MEETING

WWCH BOARD OF DIRECTORS

OFFICERS

President	Andy Anderson
Vice President	Steve Procter
Acting Secretary	Denis Muras
Treasurer	Larry Page
Publications Director	Gary Rowen

DIRECTORS

Lance Miles	Linzie Rogers
Jon Sears	Bob Wink

COMMITTEE CHAIRS AND CLUB SERVICE PROVIDERS

Book Library	John Gay
Historian	VACANT
Members/Name Tags	Lorraine Lewis
Membership Book	Patti Page
Newsletter	Joyce Saylan
Photographer	Gary Rowen
Raffle	Don Singer
Refreshments	Dave Kissinger
Donuts	Roslyn Hager
Technology	Denis Muras
Video Library	Blaine Stokes
Web Master	Gary Rowen

SHIRTS! CAPS!

Get yours today!
**Wear your WWCH official shirt
or cap to all the upcoming
shows and workshops.**

Order a shirt or pick up a cap at the meeting.

Your name can be custom embroidered on the shirt!

SHIRTS: \$22.00 CAPS: \$6.00



Guests are always welcome at WWCH

Newsletter Publication --This newsletter is designed and distributed by Joyce Saylan.
Send content or questions by email to sayjoyce@hotmail.com.

WWCH PURPOSE

The Woodworkers Club of Houston is a group of men and women of all ages and skill levels who promote, educate, and share the craft of woodworking. The club meets the second Saturday of every month from 9-11:30 at Bayland Community Center, 6400 Bissonnet at Hillcroft. Guests are always welcome at no charge. Membership dues are \$24 per year, or about the price of one good clamp!