

WOODWORKERS

CLUB OF HOUSTON

VOL. 4, NO. 2

FEBRUARY, 1988

Officers

Sharon Buckley - President
 Kent Moore - Vice President
 Don Richardson - Sec./Treasurer
 Steve Procter - Newsletter Editor

Doug Blodgett - Board of Directors
 Jimmie Harp - Board of Directors
 Ron Kuenning - Board of Directors
 Hebert Wilbourn - Board of Directors

JANUARY MEETING

The January meeting was held at Pella Windows. We would like to thank our most gracious hosts Curt Sunday owner and Brad Krog Operations manager for their hospitality and coffee. Brad and Curt described the company as one of the oldest and most computerized plants for making windows and doors. They had a very interesting video about the company, we also were able to tour the showroom and their workshop where they assemble the components.

The components are manufactured in one very large computerized factory then shipped to the various local distributors, who do the selling and the cutting and assembling of the various components.

They had some very interesting equipment to cut the components, work tables that would rise, tilt, turn 360 degrees and one work table which had hundreds of holes in the top to allow jets of air to raise large windows, to allow one workman to handle. One of the machines was for drilling holes in glass for the working components.

There windows and french doors are made up of clear lumber and clad on the exterior portion with anodized aluminum to protect it from the elements.

You can also get their product with a workable mini-blind sandwiched between the panes of insulated glass. Roll-up window screens to keep the bugs out when the window is open and when the window is closed, the screen rolls up into the window, so you have an unobstructed view.

OLD BUSINESS

The Wooden medallions that were to be attached to the December Show and Tell awards were passed out. If you were not at the January meeting Sharon has the remaining medallions, see her at the February meeting.

A Big Thank you to Chuck Maxwell for taking the time and effort to make the medallions.

If you would like to wear the colors of the Club, Contact Kent Moore about T-Shirts and Don Richardson about Baseball caps both emblazoned with the Woodworkers Logo.

Zatis Murphy would like your input into any Safety ideas, Experiences or Horror tales that you could share with the members.

SURVEY FOR DECEMBER 1988 MEETING--- Final call if you have an opinion about the meeting send your surveys to Sharon or turn them in at the February meeting----Speak now or it will be too late.

TREASURER'S REPORT FOR 1987

By Ron Kuenning

Activity/Item	Amount	Balances
Beginning Balance		\$1,799.23
****Revenue****		
Adjustment	\$0.18	
1987 Dues	\$1,026.00	
Company Memberships	\$300.00	
Charity Sale	\$3,807.00	
Dec. Dinner	\$1,175.00	
1988 Dues	\$733.00	
Bank Error Correction	\$3.00	
Caps	\$150.00	
Total Revenue		\$7,194.98
*****Expense*****		
Newsletter	\$969.49	
Office Supp. and Postage	\$539.51	
Photo Copies	\$20.70	
Speaker System	\$192.94	
Video Tape & Computer Prg	\$125.79	
Caps	\$129.00	
Freight (on Maple)	\$176.04	

****Expenses con't****

Bank Charges	\$39.36	
Dec. Dinner	\$1,287.90	
Dinner & Dues Refund	\$74.50	
Make-A-Wish	\$3,500.00	
Charity Sale Expense	\$78.35	
Bank Error Correction	\$18.00	
Telephone Expense	\$20.76	
Total Expense		\$7,172.43
Net Gain		\$22.64
Ending Balance		\$1,821.87

NEW BUSINESS

As the New Year starts we need to fill some committee positions that have become vacant. We asked for Volunteers at the last meeting with no takers. We need every members support, its not hard work, its usually a lot of fun and you get to better know the other members.

The following committees will need a Chairman to organize, delegate and make sure the work gets done.

Historian: The Historian would keep a history of the Club. Each Year as we add more events and accomplishments we should record it for future members to use and expand on. This would be a good one person committee. Once the initial research is completed, it would be a very easy and fun task.

Name Tags and Name Board: The Duties would be to be responsible for the name tags and bringing the Name Tag Board early to each meeting. You would be responsible for assembling the name tags not printing--which would entail inserting the printed tags into the plastic badges, placing them on the board, bringing or arranging for the board to get to each meeting on time.

Refreshments: To have coffee and sometimes donuts at a meeting, this is not necessary as many times our host supplies the refreshments. This committee(which should be more than one person is responsible for purchasing the refreshments, making the coffee, collecting and counting the coffee kitty money.

Newsletter Associate Editor: Duties would be to help Steve with the newsletter, to cover for him at the meetings when he can't attend and help to write and find articles.

Charity Show Committees will be formed later in the Year as needed.

The following committees have Chairmens and these need some help. If there is a committee you would be interested in call the chairman listed or if he or she should ask for your help---Please say Yes.

Advertising(Newsletter):	Bill Sallans	465-0291
Clinics and Workshops:	Murray Gordon	729-0409
	Don Richardson	661-1365
Field Trips:	Bob Soderblom	466-1222
	Hebert Wilbourn	682-7330
Group Purchases:	Doug Blodgett	353-9819
Libraries:	Andy Anderson	723-1030
Video Tapes:	Murray Gorgon	729-0409
	Don Richardson	661-1365
Membership:	Hebert Wilbourn	682-7335
Newsletter Editor:	Steve Procter	728-1459
Printing:	John & Barbara Arnett	877-8466
Address Labels:	Sharon Buckley	944-6739
Mailing:	Henry Reed	465-8070
Publicity:	Doug Blodgett	353-9819
Roster:	Sharon Buckley	944-6739
Safety:	Zatis Murphy	469-3563

PRESIDENT'S CORNER

By Sharon Buckley

Participation: This is a word that we use often. But in life you can't get something for nothing---and thats just what you will get out of this organization if you don't participate you will get ---ZIP---NOTHING.

When you participate you will get: 1.) FRIENDSHIP 2.) KNOWLEDGE 3.) A SENSE OF ACCOMPLISHMENT FOR A JOB WELL DONE AND LOTS OF FUN.

I know when I first joined this club as a Charter member and the 1st and only female for a long time, I was slow to volunteer but once when reading a Newsletter to my surprise I was listed as the next Sec./Treas. (Thats how we use to do it---you couldn't back down---it was in print.)

At that time in the club history---we had just as many jobs but a lot less members. So everyone had to double and triple up on jobs. this shouldn't still happen but it does.

It takes a little effort but what you'll get back will be a lot more than you put forth.

In very club there is always a group of workers you can depend on---ask them for help and its done.

This is great. But I would like to see a larger group of members participating for the good of the club and the members.

Do you want just a small percentage making all the decisions and doing all the work ?

IT'S UP TO YOU !

PROBLEMS AND SOLUTIONS

Problem No. 1 What type of equipment is needed to put a Bevel Edge on Plexiglass?

Solution to No.1:

1. Use the same equipment as you wood use with wood.
2. if you want to polish the edge you can use

a polishing compound and a muslin polishing wheel attached to a drill or drill press, the compound is usually in stick form (there are different compounds for different tasks) load the compound onto a spinning wheel. Run the wheel back and forth over the edge to be polished. If your cut was not a smooth cut, you can use a metal file to smooth out any saw marks before polishing.

3. This next operation requires courage---you can run the flame from a propane torch along the edge to smooth BUT DON'T HESITATE OR STOP OR YOU'LL NEED A NEW PIECE OF PLEXIGLASS.

Problem No. 2 How can you cut thousands of carpet circles.

Solution No. 2:

1. Cut by hand with a carpet knife or exacto knife.
2. Make a cookie type cutter and use with a press.

Problem No. 3 What type of glue can be used to make continuous sanding belts.

Solution No. 3:

1. Elmers Type Glue---white or yellow.

DELTA 18" ELECTRONIC VARIABLE SPEED SCROLL SAW PROBLEM SOLUTION

by Henry Reed

Many of our members own, and have reported problems with their Delta Scroll Saws. Specifically, the problems relate to fluctuating speeds and excessive vibration.

The fluctuating speed problem was well covered by Murray Gordon in the November 1987 newsletter. Robert Archer of Delta, and the local repair agent with Porter Cable assured me that this problem almost always is caused by improper clearance between the Speed Sensor, Reference No. 36 on the Parts List and the Speed Sensor Rotor, Reference No. 88. It is essential that the ten thousands (.010) separation be obtained as discussed by Murray Gordon in the November 1987 Newsletter.

VIBRATION PROBLEM

Again, according to Delta and the Porter Cable Repair Center, the problem of excessive vibrations is caused by an error in the Schematic Drawings sent out with some of the early models of this machine. The drawing shows both the Idler Counter Balance, Reference No. 85 and the Counter Balance, Reference No. 95 to be facing left. The Idler Counter Balance must be facing RIGHT. If your machine is set up incorrectly, you must loosen the set screw and turn the counter balance 180 degrees to the right. Be sure to re-tighten the set screw on the flat so that it will not vibrate loose.

Additionally, Mr. Archer, with Delta assures me that this Scroll Saw has a TWO YEAR

WARRANTY instead of a ONE YEAR as reflected by some of our local dealers. Further, he said that if any dealer, or repair center did not understand this TWO YEAR WARRANTY, to ask them to call Delta for clarification.

SAFETY

By Zatis Murphy

Jointers are considered by some to be among the safer stationary power tools. However, the potential for injury still exists.

Resharpener the knives frequently to maintain the best cutting capability; dull knives may chew up the stock. Check the stock for nails, screws, staples, etc., BEFORE milling the stock. Never joint stock with loose knots or severe defects.

Never try to surface short stock on a jointer. A good rule of thumb (pun intended) is to use a hand plane for stock less than 12 inches long. The leading edge of short stock may catch on the cutters, with your fingertips following.

Be sure that all adjustable parts of the jointer are locked tight and use the safety guard when possible. As with other rotating power tools, be sure to wear safety glasses and avoid loose-fitting clothes which may be pulled into the cutters.

Keep your finger away from the cutters. Never let your fingers hang over the end of a board. Use push blocks when surfacing or jointing thin stock; a grout spreader having a soft rubber pad works well for this. Always stand to the left of the machine. (Sorry lefties, but like many other tools, jointers were designed by right-handed folks!)

Joint with the grain whenever possible. Be very careful if you try to plane the end grain of stock; the stock should be at least 10 inches wide. Use a shooting board and a hand plane on end grain of narrower stock.

Avoid distractions, give the machine all your attention and think before you cut!

BUY AND SELL

For Sale: Craftsman 12" Bandsaw with stand \$250.00, Buffalo 5 Speed Heavy Duty Drill Press Floor Model 1/2" capacity, 1/2" HP Motor. \$175.00 Ralph Halvorsen 729-8144.

For Sale: 3 Wheel Band Saw \$50.00, 2 Speed Jig Saw \$15.00 Leonard Ekholm 879-1616.

For Sale: Sears Table Saw \$250.00, Sears Radial Arm Saw \$250.00 Kent Moore 686-6006.

For Sale: Sears 10" Radial Arm Saw \$100.00 Bill Baker 667-8381.

For Sale: Sears 10" Table Saw with Universal Jig \$225.00 Sharon Buckley 944-6739.

For Sale: Two-2-stage regulators-1-oxygen 1-acetylene. Don Sloan 688-8986.

SHOW AND TELL

Don Sloan showed a very well made shell shaped Jewelry Box made out of Padouk.

Ed Caesar has made a Replacement Fence. Similar to Beismeyer Fence made from Aluminum stock and Unistrut. Ed got the plans out of the Jan/Feb 1988 issue of Fine Woodworking, then he proceeded to Caesarize (Term meaning to make better by Ed Caesar). The plans call for a locking knob--which he changed to a cam action one motion locking handle plus he added a finger saver like the Vega Fence.

Ed Caesar, Chuck Maxwell and Dan Shaklovitz went in together to purchase the Aluminum from Allied Metals which helped reduce the Cutting Charge (\$8.00 per first cut). This is why you want to get to know the members better.

ANNOUNCEMENTS

SPEAKOUT is for members to Speak to the membership but if no one will write a speak-out we just won't have this in the Newsletter:

Speak-out can be about almost anything--IDEAS, SUGGESTIONS, PRAISE OR COMPLAINTS about the Club. Maybe you would like to praise or complain about a woodworking product, a company or anything related to wood that has affected you--GOOD OR BAD.

NEWSLETTER ARTICLES:

We would like you to share your successes and errors. Have you used a finish that you really like, share it with the members.

How about an article you might have read, a TV Program relating about wood or a demonstration, please share it with the members in an article.

Just hand write it and send it to Steve-- you don't have to be a Shakespeare to write an article for your Newsletter.

PLEASE SHARE !

NEWSLETTER ADVERTISERS:

THE WOODWORKERS' STORE for mailorder.
HARDWOOD LUMBER CO. in Houston.

Whenever you make a Purchase please check with our advertisers and Buy from them first. Their support helps to defray the cost of this Newsletter which in turn keeps your dues as cheap as possible.

PRINTING--This newsletter is printed by John and Barbara Arnet of SPEEDY PRINTING SERVICE OF TEXAS 3727 W. Alabama 877-8466 at a very reasonable discount-- John and Barbara are also members of the club.

When you need printing see them for quality printing, be sure to tell them you are a member.

SPEAKING OF DUES--THEY ARE DUE NOW!!!!!!!!!!!!

February will be the last Newsletter you will receive for 1988 if your dues are delinquent.

We will be compiling the NEW MEMBERSHIP ROSTER BOOK. This will be published only once in 1988, there will be space in the back for additional members. The New Members names and addresses will be printed in the month Newsletter. Each member will have to add these names to their own book.

If you don't wish to be left out of the book pay your Dues Now or be Dropped from the March Mailing.

SHOP TALK

By Don Sloan

When using a wood-filler on a project that is going to be stained. You can help to eliminate the difference in color between the wood and filler if you use a colored filler. I like Durwoods Cold Water Filler (Putty). It is in a powder form--you can use water color paints or acrylic paint to mix the powder. Try to mix your paint the color that you want your finish to be.

OFFICERS PROFILE

By Hebert Wilbourn

I was appointed to fill a vacancy in the Board of Directors in 1987 and elected to the Board in 1988. I am Hebert Wilbourn, born 80 years ago in Mart Texas, the shyest, most backward kid of the decade. In 1919 we moved to Houston and I learned that there is a world beyond Waco. I attended the old Central High School, later changed to Sam Houston High downtown, when I graduated. I had one year of San Jacinto Junior College, embryo of the University of Houston. During the Depression I worked at all kinds of jobs. From frying donuts, farming, surveying, to operating a sewing machine. In 1941 I got smart and married Jeannette Fisher, my most loyal supporter. soon after our first child was born I served a term in the Navy as a radar operator on ground control approach. At the end of the war my second child was born, a boy who is now an accomplished woodcrafter.

I worked for the Wilson Stationary & Printing Co., becoming Buyer of Office Supplies and eventually responsible for the entire office supply operation.

The first woodwork that I remember doing was at 13 years old. I had a job nailing up boxes. I earned one cent per box. During part of the War Years a Partner and I built houses out of lumber so green that if you missed the nail sap would splash in your face. I envision a Woodworker's Club of Houston in a permanent meeting place of their own, in some central location where we can keep our library, name tags, etc., hold seminars and workshops and eventually have an outlet where members can place some of their projects for sale. If it takes five years to achieve this and we get started NOW it will be ours in five years, if we wait five years to start it will be ten years away. WHAT DO YOU THINK ?

LIBRARY

The library is for the use of every member. We are missing many issues of the Woodsmith Magazine. Woodsmith kindly gives us this very informative publication for our library. Please return all outstanding issues at the February Meeting or mail them back to Andy Anderson or the Club's P.O. Box. If we have to spend club money to replace them it will just make your dues go up higher. If you would like to have your own issues Woodsmith would be glad to have you as a subscriber.

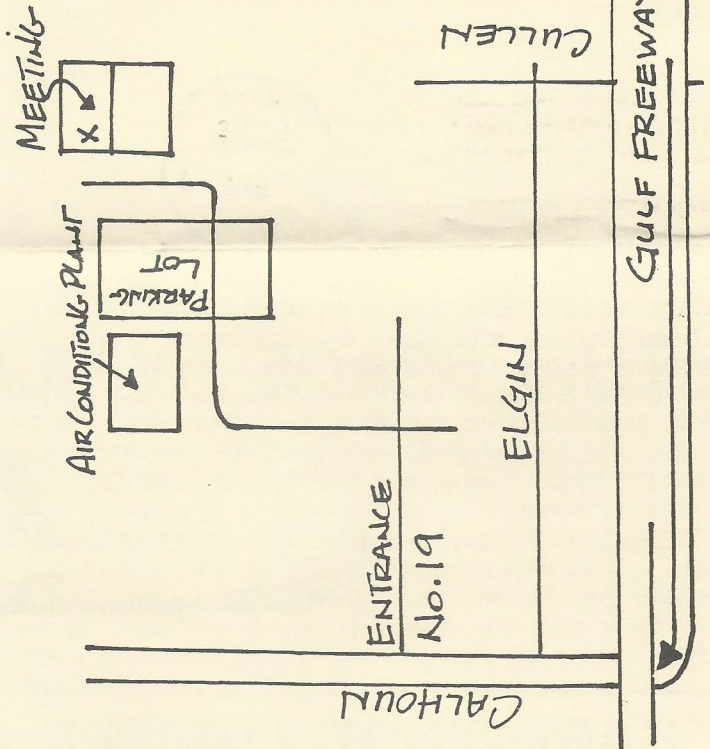
FEBRUARY MEETING

WHEN: FEBRUARY 13TH 9:00 A.M.
 WHERE: UNIVERSITY OF HOUSTON
 INDUSTRIAL ARTS BLDG.

PROGRAM: DR. BILL FORKNER has graciously offered the use of his climate controlled shop and his expertise at THE ART OF GLUES AND GLUING UP BOARDS. (Edge joining etc.) If you having problems---Get your questions ready.

DIRECTIONS: PLEASE NOTE: The Exit is now Open on the Gulf Freeway. If your south bound on I 45 get into the left lane which becomes the Calhoun Exit. This exits right onto Calhoun, Go to the the U of H Entrance Gate 19 turn right. After entering, drive between parking lots on both sides to the first street, turn left and follow around between buildings to the end of the street then look to see the older Concrete Bldg.

BRING YOUR FOLDING CHAIRS--SEE YOU THERE!



NEWSLETTER INFO

THE MARCH NEWSLETTER
 LAST DAY FOR PUBLISHING--FEBRUARY 24, 1988

THE NEWSLETTER WILL BE MAILED THE WEEK OF
 MARCH 7TH.

ANNUAL DUES

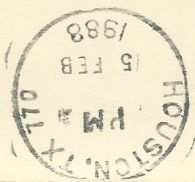
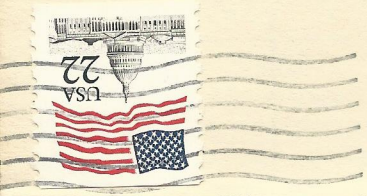
DEADLINE JANUARY 31, 1988

TO JOIN W.W.C. OF HOUSTON FOR 1988; BRING TO THE REGULAR MEETINGS OR SEND YOUR \$12.00 ANNUAL DUES TO WOODWORKERS CLUB OF HOUSTON P.O. BOX 34481, HOUSTON, TEXAS 77234. MAKE CHECKS PAYABLE TO WOODWORKERS CLUB OF HOUSTON.

Cut off and complete

 LAST NAME _____ FIRST NAME _____
 HOME PHONE _____ WORK PHONE _____
 ADDRESS _____ CITY _____
 STATE _____ ZIP _____ SPOUSE'S NAME _____
 OCCUPATION/CRAFT:** _____
 NAME OF EMPLOYER _____

*OPTIONAL FOR USE IN CLUB "YELLOW PAGES" (TO BE PUBLISHED IN 1988)



Woodworkers Club of Houston
P.O. Box 34481
Houston, TX 77234

THIS SPACE AVAILABLE FOR YOUR AD

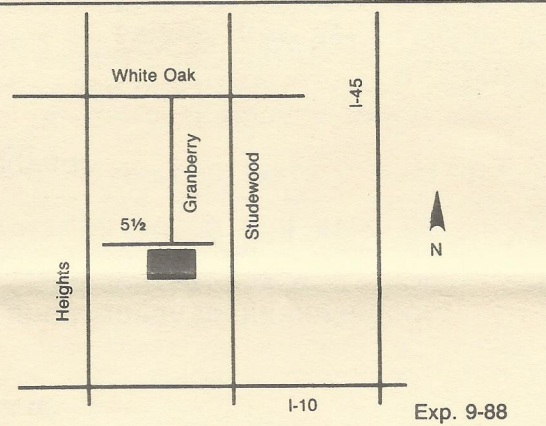


HARDWOOD LUMBER CO.

700 E. 51/2 St. (In The Heights)
Houston, Texas 77007
(713) 862-6628
Hours: M-F 7:30-5:00, Sat. 8:30-1:30

We stock over 65 species of lumber including
hard to find exotics!

Also: Plywood, Veneer, Moulding, Formica,
Custom Milling, Woodworking Tools, Books, etc.



Send Today for the Most Complete Catalog Selection of Woodworking Supplies

Please Enclose \$1.00 (3rd class) or \$2.00 (1st class)

Name _____
Address _____
City _____ State _____ Zip _____

Orders Shipped Within 48 Hours

5-88

21801 Industrial Blvd., Rogers, MN 55374

