

Woodworkers Club

OF HOUSTON

VOL 10, No. 2

FEBRUARY, 1994

Officers

Sharon Buckley - President 944-6739
Art Chester - Vice President 469-1990
Steve Procter - Sec./Treasurer 728-1459

Board of Directors

Bud Froelich - 859-6620
Jimmie Harp - 664-4906
Ted Kurland - 729-4693
Joe Wainright - 666-8475

Sharon Buckley - Newsletter Editor 944-6739

JANUARY MEETING

Jon Hall representative for the Bartley Collection presented us with an advanced seminar on the Bartley finishes.

If you have used Bartley's, one of the great features is that dust does not stick to it--like other finishes, once dry you just wipe the dust off.

Since most of us do our woodworking and our finishing in the same shop, with Bartley's you don't have to have a totally dust free environment.

Bartley's Gel stains and varnishes are the consistency of vaseline.

Bartley's finishes end face adhesion sticks to itself so you can eliminate sanding between coats. Polyurethanes will not stick to itself so you must sand between coats.

Since you wipe it on and buff it off---you get no runs --no drips--and no brush marks.

Bartley's stains are pigmented varnish and does not raise grain and each additional coat will darken up to four coats.

Can you mix custom colors with Bartley's stains and varnishes? Yes. You can intermix Bartley's stains with each other or add oil paint colorants to the stains or to the varnishes.

Bartley's Walnut is on the cool side (it has green in it) if you want it to be warmer add red and to cool it down add green.

For a deep walnut add Bartley's Jet Mahogany to Bartley's Walnut stain and you will get a great color.

One of the hardest woods to finish is Pine--its best to use a stain toner or wood conditioner, mix the gel varnish with mineral spirits (paint thinner) on a ratio of one to one. To be within Texas VOC standards the ratio is three pints mineral spirits to one gallon of gel varnish. One to two coats of stain and three to four coats of gel varnish. Rub finish using 0000 steel wool or Scotch Brite with Antiquax and buff.

To eliminate lap marks wet a rag with mineral spirits over large areas--then buff out.

Extending shelf life ! Keep the lid clean. Sometimes placing plastic wrap on top of the gel--sometimes this works--sometimes not.

Commercial users buy Bartley's in gallon containers--remove it from the gallon cans and place the Varnish in Ziplock Freezer bags, then store the bags in boxes and just take out what they need then reseal the bags and the varnish will stay fresh.

Bartley's Paste wood fillers come in seventeen colors. Fillers are almost necessary for open grain woods.

Originally paste fillers were the consistency of peanut butter. Bartley's is a creamy and easy to stir product.

The best way to apply filler is to put on a thick coat of filler before you stain--let it haze over, with a plastic putty knife or plexiglass scraper force the paste filler into the grains by scraping across the grain--Burlap or thin indoor--outdoor carpet. If you let the filler dry you can't get it off with scraping--just wipe a little more on and it will liquify. Use 180 to 220 sandpaper to sand the filler off the surface.

You can also apply sanding sealer first then apply the paste filler in the same method as above.

Paste wood filler can also be used on turnings. Pennsylvania Cherry Wood filler works great on exotic woods.

Fine wood finishes begins with the work done to the wood before applying a finish. This is the most important part of any finishing.

Sanding does not smooth wood--it creates scratches--do not always start with coarse paper--you are just adding more scratches.

Start with 120 to 150 grit sandpaper, the finer you sand the lighter the stain will be.

In a good finishing shop the light shines across from the side edge not from the top. Any flaws will really show up.

Random orbit sanders will leave scratches.

When hand sanding, always use a true block that is flat-flat and always back sandpaper up--do not use only your hands.

Sand in one direction with the grain not back and forth.

Worn out 120 grit is not 180 grit its just worn out 120 abrasive--always clean off sawdust before changing grit.

Before finishing wipe the wood over with mineral spirits--this will show up glue spots and scratches in the wood.

By using different rub outs you can achieve different lusters in the finish.

Auto supply stores carry 1200 to 1500 3M wet dry paper--you can use Scotch-Brite pads for buffing down finishes.

Really fine finishes have as many as 50 steps and very expensive to achieve.

Jon told us about Micro-Mesh which was developed to polish the Plexiglass windshields on the F16 aircraft.

It consists of grit embedded in latex rubber. The grit moves around and abrades itself.

They make a kit for woodworkers that include grits in 1500, 1800, 2400, 3200, 3600, 4000, 6000, up to 12,000 grit.

At 6000 grit the scratches are not visible to the eye.

Micro-Mesh is also available in PSA discs.

Top your finishes with a good quality wax.

Jon gave us all samples of Anitquax which keeps wood finishes clean, a limited water barrier and human grime.

This wax is available at Berings and Ace Hardware City at Memorial and Kirkwood.

Bartley's will bond to old finishes--but first clean using Scotch Brite with paint thinner to clean surface before applying Bartley's.

JON'S FINISHING TIPS

1. Always use paste fillers on Burl veneers.
2. To clean out gel varnish out of corners or carvings--use a Bristle brush.
3. To fill nail holes--mix Whiting powder with the same gel stain you will use to finish the piece to thick consistency and plug the nail holes.
4. You can use lacquer over Bartleys wood filler--just make sure the filler is dry.
5. You can spray lacquer over Bartleys but you cannot brush lacquer over Bartleys.
6. Wood can be too smooth for stain--stop at 220 grit then stain--after you varnish you can finish with higher grit.

After the program Jon gave away all of the remaining Bartleys that he was using for demonstration.

Jon gave us a program four years ago on Bartleys which was enjoyed by all and a lot of us have used Bartleys since. This program really showed us what else could be done with Bartleys. I had no idea that you could thin down Bartleys and use as a wood conditioner or stain toner. I would have thought that you destroy the varnish by changing the consistency from a gel to a liquid.

You can always tell how good a program is by the attention of the members and all the great questions that were asked.

Thanks Jon for another fantastic and informative program.

PRESIDENT'S CORNER

By Sharon Buckley

Our January meeting was well attended with 115 members signing the attendance sheet.

At the last meeting Denis Muras said that he read that The Show (Woodworking show) had been cancelled in Houston. There was an article in Woodshop News about the company that sponsored The Show and they are just this side of Bankruptcy and have cancelled all scheduled shows. Another company has picked up some of the shows but not the Houston show.

The footlockers have all been assembled and will have the finish applied by the time of our meeting.

We had originally planned for any member that wanted to make a footlocker would be able to take one or more to his shop and assemble. Because of the deadline that was set for delivery, the logistics in getting them picked up by the individual members, we also needed the footlockers to look the same it was decided that it would be easier and faster to make the footlockers in groups.

If you wanted to make a footlocker in your shop, I apologize that we just couldn't get all of the parts, hardware and finish distributed to 62 different members.

I hope that you all will attend the luncheon when we deliver the footlockers.

Jon Hall mentioned using 3M products like Scotch-Brite for finishing. Art Chester has contacted the 3M rep to give us a program not on sandpaper but on some of the newer products for finishing, like Scotch Brite.

At the last IWF (International Woodworking Fair) in Atlanta 3M had rolls and rolls of different finishing products for cleaning, finishing, scuffing, blending, scouring, and deburring, for use on metals, wood, plastics, composites, ceramics, porcelain, glass and rubber. These products replace wire brushes, steel wool, scrapers, sandpaper, sponges and rags.

Remember Perry Henderson that makes to scale the large models of trucks, etc., there is a nice article written about him in the current Woodshop News.

Well if you don't know already Woodworking Unlimited/ Shopsmith has sold twelve of their stores to Woodcraft. Starting February 3rd the Shopsmith store becomes Woodcraft, for all you members with Shopsmith equipment, Woodcraft will continue to sell and service shopsmith equipment.

Included in this mailing you will receive your new membership book with roster in the back, two maps--one for the footlockers delivery and luncheon and one for the March 19th B.B.Q.

Please save both if you plan to attend, this will be the only maps sent out. I hope to see you at The Boys and Girls Harbour and the Club B.B.Q.

New name badges will be at the February meeting.

FOOTLOCKER DELIVERY AND LUNCHEON

The correct date for the delivery and luncheon is Sunday February 20th at 1:30 P.M.

All the footlockers are at Sharon's shop. We will need volunteers with covered vehicles to meet at Sharon's shop on Sunday at 12:00 to load the footlockers and still give us plenty of time to get there by 1:30. If you can help please tell Sharon.

If you are planning to attend the luncheon--you must sign up at the February meeting, as we must have a count for the folks at the Boys and Girls Harbour.

Included in this mailing is a map the Boys and Girls Harbour in La Porte.

B. B. Q. AND WOODWORKING FAIR

WHEN: SATURDAY MARCH 19TH 11:00 A. M.
FOOD--12:00 NOON RAIN OR SHINE

WHERE: SHARON BUCKLEY'S SHOP
MAP AND SIGN UP SHEET IS INCLUDED
IN THIS MAILING

DEADLINE FOR REGISTRATION--MARCH 12TH You must sign up and pay by this date. Because food has to be prepared we cannot accept anybody after this date.

DOOR PRIZE --RAFFLE

January's raffle was a Ryobi Detail Sander. We sold \$86.00 worth of tickets, the sander cost us \$26.81 for a net profit of \$59.19--not bad for our first raffle. Each month we will have a door prize raffle except this month. Steve Walker won the Ryobi Sander.

February's Door Prizes will be supplied by Stanley Tool Works--Every member attending will receive a door prize ticket. The following is the list of door prizes that will be given away at the meeting:

1. Limited Edition Powerlock Tape Cassette Player.
2. Limited Edition Powerlock Telephone.
3. Limited Edition Stanley Contractor Hats.
4. Value pack Tape Rule and Knife Set.
5. Product Knowledge booklets.
6. Stanley Pocket Protectors.
7. Magnetic Belt Clip "Contractor Grade" for any Powerlock Tape.
8. Limited Edition Can Coolers.

SAFETY ROUTER SAFETY By Zatis Murphy

Always start with a clean work area and work environment.

Feel right and dress properly.

Be sure to wear safety glasses and ear protection.

When working free hand with the router use both hands--the router has lots of torque and always secure the work piece.

Watch out for the cord and drape the cord over one shoulder.

When cutting the outside of a piece move the router counter clockwise, on inside cuts cut clockwise--this way you'll have less tear out.

Router table--use a fence and the fence should have an opening sized to the bit.

Carbide tipped bits are the best.

Large bits should have 1/2 inch shaft for safety.

Never use a Raised Panel Bit freehand.

When routing small work pieces use a jig or hand screws.

Watch feed rate--do not feed too fast.

Routers with large horsepower 2 1/4 to 3 1/4 are best used in a router table.

Use a fence to match height of the wood that you are routing.

Always let the router come to a complete stop before removing it from the wood.

If you use very large bits--its best to have a variable speed router.

PROBLEMS AND SOLUTIONS

Leonard Elholm wanted to know if there was a better place to get rechargeable batteries replaced than just buying from the manufacturers? Yes. Mathews Rechargeable Batteries 77662 Braniff 641-6449. You must bring the old battery holder in and they will replace the batteries inside.

Braniff street is directly behind Hobby Airport. Go down Telephone Street, turn left on Braniff and Mathews will be on the left side a couple of blocks down.

SHOW AND TELL

Bill Hochmuth made a box from a slab of Cypress that used to be a fireplace mantel.

Bob Boteler free hand routed a sign for his subdivision--he routed the letters and wild animal.

Steve Procter showed us his latest Mahogany rocking horse large enough for adults to ride. Steve did the construction of the horse and his wife Vicky did the carving. The horse has a real horse hair tail and mane. The horse was equipped with a real leather saddle and bridle. The horse was finished with an oil finish.

VIDEO TAPES AND LIBRARY BOOKS

The video tapes and library books can be checked out for one month if you don't return them you will be responsible for late fines.

Late charges for the video tapes are \$5.00 per each tape that you have checked out and \$1.00 for each book.

If you cannot attend the meeting, you can return the tapes to any officer or return them by mail before the next meeting or pay the late fees. So get those tapes back on time or else.

NEW PRODUCTS

Delta has been promising a new way to attach those scroll blades to their scroll saws. Well they are finally available. Its called a Quickset II Blade Chuck for Delta 16" , 18" and 20" Scroll Saws. The following is what Delta says is a revolutionary, new blade chuck that Greatly simplifies the tedious and time-consuming task of blade threading in scroll fretwork involving inside cuts and designs.

Requires no wrenches or blade centering tools. Speeds-up blade changing and threading. Increases productivity.

Well I have purchased this quickset II blade chuck but have yet to install it on my scroll saw. I'll let you know at the meeting how well it works.

This item lists for \$19.95, I purchased mine at Pasadena Industrial for \$14.95.

In Woodshop News they introduced a new Plate Joiner made by Ryobi and sold under the Sears Craftsman line. This plate joiner is touted as having a "user-friendly" design. rather than the barrel-grip style common to many plate joiners, the Craftsman has a contoured handle designed to keep the user's hand and wrist in a straight line. A chip collection box is intergrated into the lower rear section of the tool's housing and detaches easily for dumping sawdust. Not bad for a price of \$99.00.

PROGRAM CALENDAR

March Meeting-----Bud Froelich will demonstrate his suitcase size lathe. How to make wine stoppers, etc.

April Meeting-----Mike Dietrich --bandsaw blade expert will present a program on bandsaw blades. We visited with Mike on a field trip to Falcon-Auger in October and we were amazed by his expertise.

May Meeting--Art is talking to 3M for that program on finishing products.

ADULT EDUCATION---CABINET MAKING

Robert St Jean sent some information about a new course in Intermediate Cabinet Making at Jon-D's Shop at 1235-A Blalock given by Jon D. Bothager phone 465-6500 cost \$225.00 Classes are offered on Wednesday 7:00 - 10:00 P.M. and Saturday Mornings Saturday afternoons.

SHOP TOURS

This year we would like to visit each other shops. If you would like to offer your shop for a tour we will have a sign up sheet at the meeting. We also need a member to co-ordinate the different locations and dates if you would like to help please talk to Sharon.

FEBRUARY MEETING

WHEN: FEBRUARY 12, 1994 9:00 A. M.

WHERE: BAYLAND COMMUNITY CENTER
ON BISSONET AT HILLCROFT

PROGRAM: Lou Schamble and Tom Coleman of Stanley Tools will cover the following topics: Vials and the vial covers replacement in Stanley's mahogany level, Stanley's new line of contractor's grade tools, extrusion and cruciform and how they relate to the new levels, "Can a hammer which has been around for hundreds of years be redesigned?", "what is mylar coating and how does it strengthens Stanley's tape blades?" and they will introduce the new line of Dynagrip screwdriver sets and demonstrate how easy it is to use this product.

The members will gain some great information relating to Stanley's new line of products, but they will also learn some features and benefites of existing products within the Stanley Tool line. Stanley is celebrating their 150th anniversary this year. They will also have door prizes for those members present.

Houston's Most Complete Woodworking Supply

- Henry Taylor Carving & Turning Tools
- Woodworking Machinery by Jet, Bosch, Porter-Cable, Foredom, Sugingo, Carba-Tec & Others
- Accessories, supplies, books and videos
- European & Japanese-Style Hand & Edge Tools
- Woodworking Instruction In Our 600 sq. ft. Shop

Woodworking Solutions[©]

12/94

The
CUTTING EDGE, Inc.

Woodworker's Tool & Supply

7123 SW Fwy @ Bellaire Blvd. (713) 981-9228

SYLVAN BEACH

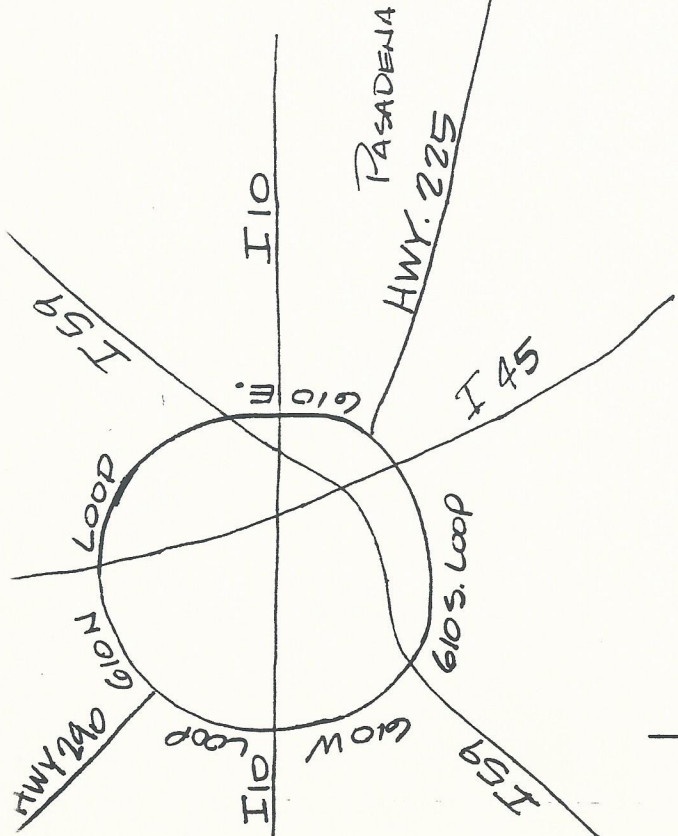
Boy's &
Girls
Harbour
471-9622

MORGAN'S
POINT

PARK AVE

BROADWAY

HWY 146



FAIRMONT PARKWAY

SAM HOUSTON
PARKWAY

GULF FREEWAY SOUTH →

ALTERNATE RT. →

TAKE 610 LOOP TO HWY. 225 EAST THROUGH PASADENA TO HWY 146 SOUTH EXIT-LEFT ON FAIRMONT PARKWAY. LEFT ON PARK AVE. - NEXT TO LAST ROAD BEFORE SYLVAN BEACH. FOLLOW WINDY ROAD TO BOY'S & GIRLS HARBOUR.

GULF FREEWAY SOUTH- LEFT ON SAM HOUSTON PARKWAY TO EAST FAIRMONT PARKWAY (RIGHT) LEFT ON PARK AVE. FOLLOW WINDY ROAD TO

WOODWORKERS CLUB OF HOUSTON BAR-B-QUE AND WOODWORKING FAIR

FOOD DOOR PRIZES DEMONSTRATIONS FUN

**ALL YOU CAN EAT BAR-B-QUE AND ALL THE FIXINGS
COFFEE, TEA AND DESERT**

**WHEN: SATURDAY MARCH 19, 1994 12:00 NOON
WHERE: SHARON BUCKLEY'S SHOP RAIN OR SHINE
SOUTHEAST OF HOBBY AIRPORT
MAPS WILL BE PROVIDED**

COST: \$8.00 PER PERSON

**DOORS OPEN AT 11:00 A. M. FOOD LINE STARTS AT NOON
DEMONSTRATIONS START AT 1:00 P. M.**

DOOR PRIZES FOR WOODWORKERS

DOOR PRIZES FOR THE LADIES

**WOODWORKING DEMONSTRATIONS
(HEARING AND EYE PROTECTION WILL BE REQUIRED)**

NON-WOODWORKING DEMONSTRATIONS

DEADLINE FOR RESERVATIONS MARCH 12TH, 1994

**FOR SAFETY REASONS NO CHILDREN WILL BE
ALLOWED**

**SINCE THIS IS THE FIRST YEAR THAT WE ARE ATTEMPTING THIS
BAR-B-QUE WE REALLY NEED TO GET EVERYONES MONEY AS
SOON AS POSSIBLE !**

MEMBERS NAME _____
HOUSE/GUEST _____

X \$8.00 PER PERSON = \$ _____

Pasadena Industrial Supply

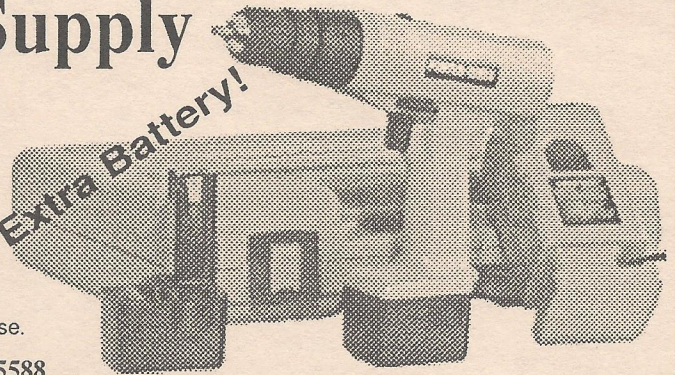
- 3/8" Keyless chuck
- Adjustable torque slip clutch
- Two variable speed ranges
0-350 rpm, 0-1000 rpm
- Balanced "T" handle design

\$139

While They Last!

PORTER-CABLE

With Extra Battery!



Porter Cable # 9840 9.6v battery drill kit with extra battery, 1hr charger & case.

222 West Pasadena Freeway, Pasadena Texas 77506 472-5588



4910 West 34th St, Houston, Texas 77092

Hours: M-F 7:30-5:00 SAT 8:30-12:30

(713) 686-6176 Phone

(713) 686-3217 Fax

DOMESTIC & IMPORTED HARDWOODS

Ash, Basswood, Birch, Cherry, Mahogany, Maple, Red Oak, White Oak, Poplar, Walnut Etc.

High Quality Domestic & Imported
Plywoods, Softwoods, Hardwood Veneer

We've Moved

Please Visit Us At Our New Location

4910 WEST 34th STREET

(BETWEEN HWY 290 & MANGUM)

11/94



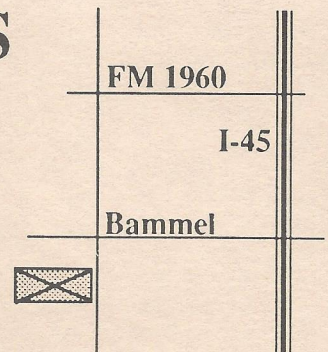
AUSTIN HARDWOODS

13001 VETERANS MEMORIAL DR.

HOUSTON, TEXAS 77014

440-0764

We stock over 80 species of lumber including rare exotics and turning stock. Plywood, Veneer, Moulding, Flooring, Tools, Millwork, Paneling Etc. also available



2/94

WOODWORKING • UNLIMITED™

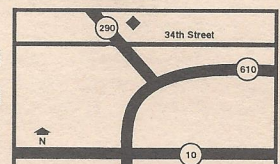
THE EQUIPMENT, THE TOOLS, THE ACCESSORIES, THE WOOD, THE HOW-TO INFORMATION, AND MOST IMPORTANTLY, THE ENCOURAGEMENT. THE WORKS.

Service
Selection
Quality
Value
Education

- ◆ **FREE** Woodworking Classes
- ◆ Frequent Shopper Discount for Wood
- ◆ Large selection of hardwoods & exotic woods
- ◆ Make your own sawdust - try out the equipment
- ◆ Expert advice and instruction



Mon-Fri: 10-8
Sat: 10-6
Sun: Noon-5



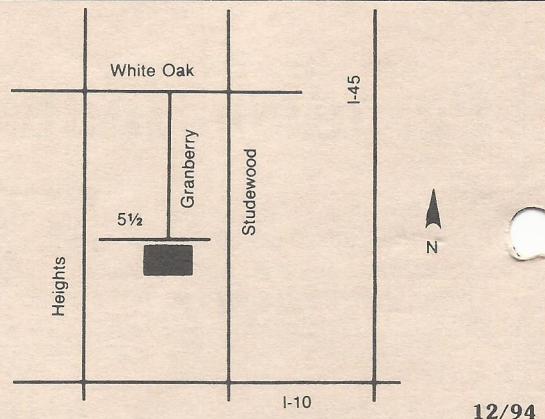
Northbrook Shopping Center
5360 West 34th St. • Houston, TX
(713) 681-5200

HARDWOOD LUMBER CO.

700 E. 51/2 St. (In The Heights)
Houston, Texas 77007
(713) 862-6628
Hours: M-F 7:30-5:00, Sat. 8:30-1:30

We stock over 65 species of lumber including
hard to find exotics!

Also: Plywood, Veneer, Moulding, Formica,
Custom Milling, Woodworking Tools, Books, etc.



Send Today for the Most Complete Catalog Selection of Woodworking Supplies

Please Enclose \$1.00 (3rd class) or \$2.00 (1st class)

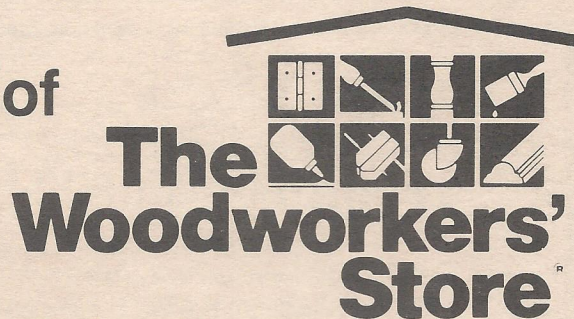
Name _____

Address _____

City _____ State _____ Zip _____

Orders Shipped Within 48 Hours

7/94



21801 Industrial Blvd., Rogers, MN 55374

PRINTED BY SPEEDY PRINTING SERVICE OF TEXAS 3433 WEST ALABAMA, SUITE C • HOUSTON, TEXAS 77027 • 713-877-8466

Woodworkers Club of Houston
P.O. Box 34481
Houston, Tx 77234