

# Woodworkers Club OF HOUSTON

VOL. 6, NO. 6

JUNE, 1990

## Officers

Don Richardson - President 661-1365  
Ted King - Vice President 351-6808  
Claude Emory - Sec./Treasurer 861-3495  
Sharon Buckley - Newsletter Editor 944-6739

## Board of Directors

Bill Baker - 667-8381  
Bob Gallant - 376-0276  
Bill Hochmuth - 774-1733  
Bill Sallans - 465-0291

### MAY MEETING

Hydrocote a New Solution For Old Problems  
Presented by Joe Rogers of J. M. Rogers  
Products of Kerrville, Texas.

Hydrocote Finishing Products are the CLEAR  
solution to the problems associated with  
solvent based finishes:

**FLAMMABILITY AND SAFETY**-- Most solvent  
based finishes such as nitrocellulose lacquers  
and polyurethanes are highly flammable or  
combustible in nature and give off Toxic fumes.  
Hydrocote finishing products are  
non-flammable, non-combustible, and non-toxic.  
**HARDNESS AND DURABILITY**--Nitrocellulose  
lacquers are characteristically inflexible and  
brittle. Great care must be taken to insure  
adequate coverage and flow-out. Hydrocote  
clear finishes are highly flexible and  
demonstrate superior flow properties.  
Hydrocote finishes dry fast, will not yellow and  
will not blush in extreme heat or humidity.  
Hydrocote finishes offer superior resistance to  
heat, water, common household chemicals,  
alcohol stains and marring,

Joe recommends when spraying you should  
use a particle mask, but Hydrocote unlike  
nitrocellulose products contribute to lung or  
brain damage.

Hydrocote can be applied over most  
nitrocellulose lacquers, urethanes, varnishes,  
shellac and most of these finishes can also be  
applied over Hydrocote brand stains and  
finishes if so desired.

Hydrocote can be applied over any type of  
quick drying stain, preferably those that dry  
within an hour such as NGR stains. If using an oil  
based stain such as MINWAX, allow 24 hours  
drying time(longer during hot and humid days)  
prior to application.

Hydrocote stains do not raise the grain if  
applied as specified. Hydrocote Sanding Sealer  
raises the grain--no more than a good quality  
nitrocellulose type sanding sealer.

For best results they recommend applying 2  
coats of Hydrocote sanding sealer. Allow to

dry 30 minutes to 1 hour between coats. Sand  
until smooth then top coat with one or two  
coats of desired finish (satin or gloss). Please  
keep in mind that the Hydrocote Sealer and top  
coats contain 35% solids. As such you will  
achieve a rapid build--and too many coats are  
not necessary to achieve the desired look. For  
hard and tight grain woods, use of the sanding  
sealer is optional.

Hydrocote finishes are repaired similarly to  
nitrocellulose lacquer. You can touch-up with  
itself or use nitrocellulose lacquer based  
aerosol cans and/or touch-up markers. If the  
latter are to be used, only SPRAY-LAC brand of  
aerosol cans and TOUCH-UP Markers from  
STAR CHEMICAL are compatible with Hydrocote  
finishes.

Hydrocote finishes can be shaded by adding  
Hydrocote Penetrating Stain to the clear finish  
slowly with good mixing to create a shading  
lacquer. Nitrocellulose type shading finish, and  
/or aerosol toners from STAR CHEMICAL  
(SPRAY-LAC brand only) can be used as well.

For best results they recommend using 220  
to 280 grit production paper on bare wood and  
220 to 400 grit NO-FILL (NO-LOAD) sandpaper  
between coats. They do not recommend using  
Garnet sand paper. For final rubbing and  
polishing, 400 to 1500 grit wet sand paper is  
recommended.

Hydrocote Plus Finish is available in clear  
gloss, satin and sealer; black gloss and satin;  
black and white primer; gloss and satin  
polyurethane which has been approved for  
Gym floors, brushable gloss varnish and  
varnish sealer.

Hydrocote is in the process of getting FDA  
approval for salad bowls, picnic tables, etc.  
Hydrocote Polyshield is for outside and a new  
product Hydroshield is for marine use.

Base concentrate colors for tinting pickling  
stains and penetrating stains are also  
available.

In dry climates you should use their flow-out.

additive to slow drying time (surface dries too fast)

Drying time 10-15 mins. to touch, 30 mins.--1 hour to sand and recoat. Finish is fully cured in 3 days.

Clean up with WATER !

#### PRESIDENT'S CORNER

By Don Sloan

At our Board of Directors meeting on May 17th, we discussed the process of pricing items for our charity sale. The three things we want to accomplish are to:

- \* Respect our members' wishes and feelings.
- \* Maximize our revenue.
- \* Move our products.

The first is the most important and must receive the top priority, the second and third are similar and go hand in hand. We have devised some procedures which we think will lead to the fulfillment of these goals.

When you donate something to the sale, you will have the opportunity to fix the price or allow the price to vary. Here's how it works. You must attach your member number on each piece you submit for sale and you are encouraged to recommend a selling price.

\*If you place an "F" after your member number, you have indicated that the price is "Fixed". No one will change it without your permission. (Example "124F" fixes the price). Don't put the "F" on the price tag!

\*If you use only your member number (with no "F"), you have indicated that the pricing chairman may adjust it if necessary. (Example "124").

We think that most members will allow the adjustment of prices; fixed prices do tie our hands somewhat. San Zeisman, Charity Sale Chairman, has appointed Bill Hochmuth to the Pricing Chairman position and Bill will be the only person who can adjust prices. Bill will assign this responsibility to an appointee when he is absent. He will probably allow all our sales people to mark items down (except "F" items) by some certain percentage as the sale nears its end. We do respect your work and feel that we are selling good, new merchandise. We are not in the garage sale business and our prices will reflect that philosophy.

On another note, we need items which fit into all price ranges for our sale. We would particularly like to see an increase in the number of items which bring over \$50.00. Don't quit on the other items though. If you have any questions, problems, or suggestions please call me, Sam, or any officer or director.

Bring your sale items to any meeting--they're great for "Show and Tell". Sam and his team are working hard to make this year's sale successful--be sure to give them a hand.

#### CHARITY SHOW

Bill Baker is signing up sales people for the show, if you can help out please sign up.

Jimmie Harp is starting a group workshop on Monday evenings, if your interested give him a call for info.

#### WORKSHOPS AND CLINICS

There will be a seminar on How To Make Your Own Marking Gauge From Scratch. The seminar will be June 9th at 1:00 P.M. following our regular business meeting. The seminar will be held at the Shopsmith Store classroom, there is plenty of room and its free to the members. Thanks to Shopsmith for there Hospitality.

Stuart Murphy is lining up a Clinic on Chip Carving Knives by Joan Brueggeman and Wooden Screw Clamps by Murray Gordon, times have not yet been set.

#### PROBLEMS AND SOLUTIONS

Problem: How to Preserve Wood Outside Without the Use of Chemicals ?

- 1). Use concrete footing.
- 2). In Australla they are using Sodium Borate to preserve wood--its non-posionous and safe to pets.
- 3). You can also use Boric Acid or 20 Mule Team available in grocery stores. 20 mule team is cheap and effective, use 1# in 55 gal of water. The easiest way to apply is place in a plastic lined trough cover with plastic and set in the sun, temperature needs to be about 100 degrees.

#### BUY AND SELL

For Sale--Ring Master with motor. \$250.00  
Ronnie Derks 694-8040.

For Sale--Mill-Route \$300.00 Chuck Maxwell.

For Sale--Duplicarver. L. D. Greenwood

For Sale--Sears Radial Arm Miter Saw with Stand and Sears 12" Band Saw with stand and accessories. Ken Sullivan 481-2441 eve's.

#### ANNOUNCEMENTS

Sept. 27-20 Mesquite Show at the Wyndham South Park Hotel in Austin.

Red Suspenders Timber Frames is having a Timber Framing Course Sept. 10-16. this course is a "hands on" introduction to the layout, joinery and design of a timber frame, culminating with a raising of the finished frame. Timber Frame Home Design Workshop Nov. 10 & 11. The goal of this weekend workshop is to give each participant a working knowledge of the basic elements of designing a timber frame home. For information contact Wynter Chauvi. Rt. 7 Box 8383 Nacogdoches, Tex. 75961 (409) 564-9465.

## SHOW AND TELL

Ken Wallis made two maple upholstered chairs copied from a doctors office. One adult and one child's size. Finished in Bartley's.

Bill Hochmuth made a table out of Tauara wood from Brazil, grain like mahogany but finishes like oak. Finished with Natural Watco.

Ted King made two separate tables to form an L shape instead of just one L shaped table, which is more versatile. Ted got his ideas from the Videotape on Shaker Tables.

Ed Burger made a 1928 Fire Engine Model, plans were in the September issue of Wood. The Fire Engine is made up of 8 different kinds of hardwood finished in Bartley's Clear Varnish.

Chuck Maxwell is finishing his Santa Fe Bench with connectors he made with a Dowel/Plug Cutter. Sanding the ends similar to a large cut nail shape, on a jig that he made.

Tom Gathright made a Poor Mans Vanity Bench from pine scraps (rafter ends).

Eugene Bullard a guest showed his idea for a Texas Trash Tree, a place to store your recycled items before taking them to the recycling center.

## CLUB SHIRTS AND CAPS

We will be placing an order for shirts and caps in June. Because of the various sizes and names of the members--shirts must be custom ordered. If you want a shirt or cap see Sharon Buckley at the meeting or mail your order with check to the club P. O. Box address. We usually do this only once a year so take advantage now! The Shirts will be golf style shirts with a breast pocket, hemmed sleeve and collar. Each members name will be embroidered on the front and club logo silk screened on the back.

Baseball Style caps this time will be brown and gold, similar to the original caps.

When placing your order include what name (1st name only) you want embroidered on shirt, size and YOUR CHECK!

Price of shirts vary a little by size:

Small, Medium, Large and X-Large-----\$17.75

XX--Large-----\$18.75

XXX--Large-----\$19.00

Caps-----\$5.00

## JUNE MEETING

WHEN: JUNE 9, 1990 9:00 A. M.

WHERE: BAYLAND COMMUNITY CENTER  
ON BISSONNET AT HILLCROFT

DIRECTIONS: Go out the Southwest Freeway (Highway 59 South) take the Hillcroft exit. Go south on Hillcroft, turn right on Bissonnet and the Bayland Community Center is on the right.

Follow the signs in the park to the community center.

PROGRAM: Chip Carving by Joan Brueggeman  
Joan is a member of our club and a member of the Woodcarvers Club of Houston. Joan took a week long course from Wayne Barton, you've seen his work at the woodworld show, his books and videotapes. She does excellent work and I know some of our members are also anxious to take the clinic she will be giving sometime this summer.

## FUTURE PROGRAMS

Ted King has lined up some interesting programs for the members.

In July THE MASTER OF JIGS--MR. JIG Chuck Maxwell will share some of his jigs, just some as he has enough for a six month program.

In August the program will be Antique Tools by Royce Bomar. Royce did a program for us not long after we started the club, very interesting and educational.

In September Stuart Murphy and some folks from the Texas Renaissance Festival on Folk Instruments.

## SAFETY

The following article is from the Power Tool Institute on Table Saws.

The Table saw is one of the most commonly used stationary power tools in any woodworking shop. Safe usage requires that it be handled with care and specific procedures be followed to prevent accidents. Read and understand the warnings and instructions on the saw and in the owner/operator's manual.

Always wear safety goggles or safety glasses with side shields complying with current national standard, and a full face shield when needed. Use a dust mask in dusty work conditions. Wear hearing protection during extended periods of operation.

Do not wear gloves, loose clothing, jewelry or any dangling objects, including long hair, that may catch in rotating parts or accessories.

Keep the saw table free of tools or debris.

Use an auxiliary work support when sawing long or wide workpieces to assure firm control of the workpiece at all times.

A table saw should be equipped with a rip fence, miter gauge, blade guard, spreader and anti-kickback device. The rip fence must be parallel to the line of the saw blade to prevent binding and possible kickback.

The blade should project only a minimal distance above the cut ...1/8" to 1/4" is plenty...check your owner/operator's manual carefully.

Never reach over or behind the blade with the table saw operating.

Use the guard on all operations where the saw blade cuts through the thickness of the workpiece.

When using the table saw for dadoing, grooving or shaping, use a pushblock to keep your hands and fingers well away from the saw blade in case of kickback or other unexpected event.

Check often to assure that guards return to their normal position quickly. If a guard seems slow to return or "hangs up", repair or adjust it immediately.

Do not cut freehand (cutting without the use of a miter gauge or rip fence).

When crosscutting, use the miter gauge to assure a straight cut, not the rip fence. The cut off piece can bind between the fence and blade, causing kickback and possible injury.

When ripping, always use the rip fence to assure a straight cut.

Make sure the blade and fence are parallel to each other. Pressure to feed the workpiece should be against the direction of blade rotation and between the blade and the fence. Use a pushstick to keep your fingers away from the saw blade. For special operations (whenever the blade does not cut through the thickness of the workpiece) such as dadoing and rabbeting, consult your owner/operator's manual.

Use a featherboard to firmly hold the workpiece against the fence and table when ripping narrow stock.

Keep your tool blades sharp. Dull blades can cause binding, possible kickback and injury.

Use the correct blade for the job you are doing. Watch for overly heated or vibrating blades. Correct the condition before continuing.

Make sure the blade is installed to rotate in the proper direction. Do not use grinding wheels, wire brushes, or abrasive wheels on a table saw.

Onlookers should be kept out of the work area. They distract the operator and make him more accident prone. A kickback or a broken carbide tip could send the stock or the tip flying with unpredictable results.

It is recommended that you turn the tool off after each completed procedure.

The saw should always be turned off before making adjustments of any kind.

Turn off, unplug when possible, and lock the table saw after each use. Remove and store the switch or lock key.

#### PREVENTING TABLE SAW KICKBACK

Kickback is the ejection of the workpiece from the saw back towards the operator. Table saw kickback may be caused by:

...the kerf of the workpiece closing up and pinching the rear of the saw blade.

...wedging of the workpiece between the fence and the rear of the saw blade (fence not parallel with the saw blade).

...a crooked cut which causes the workpiece to bind against the sides of the blade as it passes through.

...edge of workpiece against the fence not straight.

When binding, pinching or wedging occur the

motion of the saw blade tends to lift the wood and may hurl it back toward the operator.

Specific safety precautions in preventing kickback when using table saws are given below:

Always use the spreader (splitter) when it is functional. This prevents the kerf from closing and pinching the blade. Make sure the spreader is properly lined up behind the blade.

Always use the anti-kickback pawls (fingers). If a kickback should occur they are designed to grab the workpiece and prevent it from being thrown back toward the operator. Keep the teeth of the pawls (fingers) sharp.

Anti-kickback devices may not work when cutting smooth or hard surfaces. Therefore always cut with the smooth, hard surface next to the table.

Always use the rip fence to guide the workpiece in a straight line when ripping or when cutting material.

Never freehand cut a workpiece. Freehanding causes crooked cuts and potential kickback. Crooked edges on the stock can also cause crooked cuts.

Make sure the fence is parallel to the blade. If the fence closes in toward the rear of the blade it will tend to wedge the wood against the blade and may cause a kickback.

Never tilt the blade or saw table such that the workpiece is trapped in the angle between the blade and the fence. This is a condition which has high potential of causing kickback. Use the fence to the side of the blade that results in an angle greater than 90 degrees between the blade and the table.

Keep the angle between the blade and fence open so that the workpiece is free to absorb any misalignments.

Avoid standing directly behind the workpiece when making a rip cut.

Always use the miter gauge when crosscutting, and hold the piece firmly against it to assure a straight cut.

**OTHER PREVENTIONS WHICH SHOULD BE TAKEN TO PREVENT KICKBACK WHILE USING A TABLE SAW:**

A dull blade may cause a kickback. Keep blades sharp.

Make sure set tooth blades have adequate set. Tooth set provides clearance between the plate of the blade and the workpiece, thus minimizing the probability of binding. Some saw blades are hollow or taper ground to provide clearance.

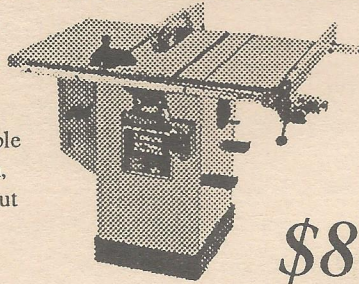
Keep saw blades clean. A buildup of pitch or sap on the surface of the saw blade increases the thickness of the blade and also increases friction on the blade surface. These conditions cause an increase in the potential for a kickback.

Do not cut wet wood. It produces high friction against the blade. Also the blade tends to load up with wet sawdust, effecting a much greater probability of kickback.

(CONTINUED NEXT MONTH)

# Pasadena Industrial Supply

Power Tool & Accessory  
Headquarters for;  
Delta Machinery, Porter-Cable  
Milwaukee, Hitachi, Bosch,  
Makita, Skil, Saftey-Speedcut  
& More!



## New 10" Tilting Arbour Saw

- 0 & 45 adjustable from table top • 2 hp 230 volt TEFC motor
- Miter gauge & rip fence storage • Motor cover included
- Auto overload protection with push button switch
- T slotted table provides support for miter gauge beyond table edge

**\$849** Delta# 36-755  **DELTA**

222 West Pasadena Freeway, Pasadena Texas 77536 472-5588

## Hardwood Lumber Co. Lawndale Division Imported and Domestic

Quality  
Hardwoods - Softwoods - Plywoods  
Mouldings & Squares

A COMPLETE SELECTION OF FINISHING SUPPLIES.

Marine Plywood  
Parana Pine  
Teak

Honduran Mahogany  
Exotic Hardwoods  
Domestic Hardwoods  
WALNUT - BIRCH - ASH - CHERRY  
CYPRESS - RED AND WHITE OAK  
AND OTHERS

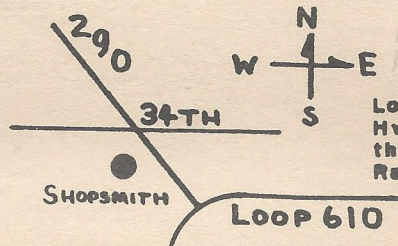
MON. - FRI. 7:30 TO 4:30  
SAT. 8:00 TO 1:00

5401 Lawndale  
(713) 921-6131

Exp. 12/90

## Your Complete Woodworking Center Check Out Our Hardwoods, Our Prices Are Low

Hours:  
Monday to Friday:  
10:00 a.m. to 8:00 p.m.  
Saturday  
9:00 a.m. to 5:00 p.m.



**Shopsmith Inc.**

Located at 34th St. &  
Hwy. 290 to Austin on  
the West side in the  
Randall Strip Center.

Northway Shopping Center  
10965A Northwest Frwy.  
Houston, TX 77092  
Phone: (713) 681-5200

Exp. 1/91



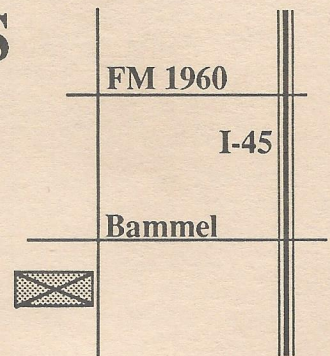
## AUSTIN HARDWOODS

13001 VETERANS MEMORIAL DR.  
HOUSTON, TEXAS 77014

**440-0764**

We stock over 80 species of lumber including rare exotics and turning stock. Plywood, Veneer, Moulding, Flooring, Tools, Millwork, Paneling Etc. also available

Exp. 8/89



## Houston Wood and Tool, Inc.



DAP Weldwood®  
Hobby & Craft Glue



DAP Weldwood®  
Plastic Resin Glue

- **Classes**
- **Fine Hand Tools**
- **Power Tools**
- **Portable Electric Tools**

Visit our showroom. Open Monday to Saturday

Mon., Tues, Wed & Fri 8 to 5, Thurs. 8 to 8, Sat. 9 to 4.

Come by or call 680-1744 - City Sales.

Located two blocks west of Highway 290 on 34th Street.  
5857 W. 34th Street - Houston, Texas 77092

Exp. 4/90

## HARDWOOD LUMBER CO.

700 E. 51/2 St. (In The Heights)

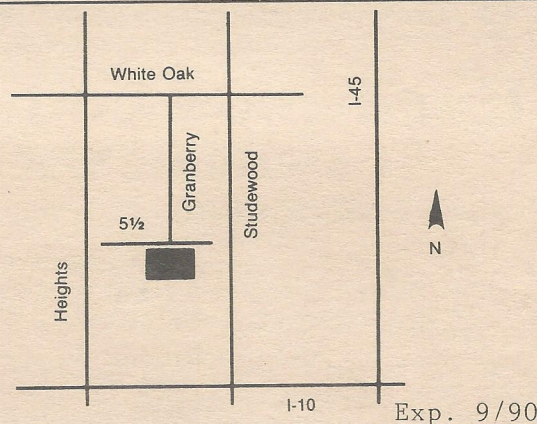
Houston, Texas 77007

(713) 862-6628

Hours: M-F 7:30-5:00, Sat. 8:30-1:30

We stock over 65 species of lumber including  
hard to find exotics!

**Also:** Plywood, Veneer, Moulding, Formica,  
Custom Milling, Woodworking Tools, Books, etc.



## Send Today for the Most Complete Catalog Selection of Woodworking Supplies

Please Enclose \$1.00 (3rd class) or \$2.00 (1st class)

Name \_\_\_\_\_

Address \_\_\_\_\_

City \_\_\_\_\_ State \_\_\_\_\_ Zip \_\_\_\_\_

**Orders Shipped Within 48 Hours**

Exp. 1/91

**The  
Woodworkers'  
Store**

21801 Industrial Blvd., Rogers, MN 55374

PRINTED BY SPEEDY PRINTING SERVICE OF TEXAS 3727 W. ALABAMA, HOUSTON, TX. 77027 (713) 877-8466

Woodworkers Club of Houston  
P.O. Box 34481  
Houston, Tx 77234

