

# Woodworkers Club

## OF HOUSTON

VOL. 6, NO. 11

NOVEMBER, 1990

### Officers

Don Richardson - President 661-1365  
Ted King - Vice President 351-6808  
Claude Emory - Sec./Treasurer 861-3495  
Sharon Buckley - Newsletter Editor 944-6739

### Board of Directors

Bill Baker - 667-8381  
Bob Gallant - 376-0276  
Bill Hochmuth - 774-1733  
Bill Sallans - 465-0291

### OCTOBER MEETING

Our scheduled program was on Design by Doc. Forkner, but the Wednesday before the meeting Doc had to have minor surgery. He's home now and doing well.

On Thursday afternoon I called Chuck Maxwell and Don Sloan and asked for their help---as always they said yes.

I suggested that we present a program on the Pin Router or Overarm Router.

A new member made a very important statement--by saying that he was a beginning woodworker and joined the club to learn and what the heck was a pin router.

The Pin router or Overarm Router, uses a router and a pin aligned with the router bit. The pin ranges from 1/8th inch on up in size. Many times the router bit is the same size as the pin but it also depends on what your finished results are to be.

You use a pattern that follows the pin to make your cuts.

If you have a sample (like a hand saw handle) you can make your pattern directly from this.

If all you have is an idea or drawing you can cut out a sample in masonite to use to make your pattern. Just remember any defects or imperfections will show up in finished item.

When cutting on the pin router make shallow passes, in 3/4" thick make at least 3 passes.

The direction of feed is reversed from a table mounted router. Chuck says that if you feed incorrectly you can tell real quick as the router grabs it--all you have to do is reverse the direction.

Pin/Overarm routers range from one that you make yourself (plans are in woodsmith) to the Onsrud Inverted Pin Router which retails for \$2675.00 Onsrud has a pin above and the router below the table top.

The router is a very versatile woodworking tool.

Patrick Spielman has written other books on the router--but his newest book ( about a year old) really expands the use of the router.

The book Router Jigs and Techniques explains how to make a bevy of jigs and the use of them. Spielman must have every router made and different jigs for each.

Chuck brought many of his Pin Router patterns--made out of sink cutouts--particle board covered with laminate.

Chuck uses double stick tape to fasten the patterns to the blank of wood that will be his finished product. When using double stick you must clamp the two pieces together either in a vise or hand clamps, the tape will not hold properly if you don't clamp it for a few minutes.

One question was --How do you remove the glue residue ? If your using the double stick tape that Shoptsmith sells, it does not leave a residue--carpet tape will leave a residue.

Chuck had samples of Hand saw handles--which can also be used as push stick handles, --lazy susans--kitchen clocks to ornate wall panels.

Don Sloan showed us how he laminates scraps from his scrap barrel and turns out great projects. When Don was making some coasters and hand mirrors he had to keep the laminations straight so he devised a guide pin piece to keep the laminations straight.

To run thin strips through his planer, Don uses a piece of 3/4" plywood with sandpaper glued to it, this keeps his stock from slipping, he then feeds the entire unit through his planer.

Sharon showed an alternative to double stick tape and clamps---a vacuum clamp.

There are many vacuum systems--many are self-contained, costing upwards of \$300.00 with many moving parts.

Instead of using a vacuum pump driven by an electric motor, the unit Sharon Demonstrated uses compressed air. Electric pumps have many moving parts that are subject to wear.

This air vacuum has no moving parts to wear out. The vacuum pump only uses 2 CFM of air at 40-80 PSI.

The vacuum pump creates a vacuum holding the wood blank to the template for cutting.

You can also make a vacuum chuck from Plexiglass which will hold the Pin Router pattern and the wood blank.

The vacuum clamp can be used for hand routing, to hold pieces or the drill press--any where you need to hold wood.

Templates or chucks need to be no smaller than 10 square inches to a maximum of 10 X 10 or 100% inches (with a holding force of approxiamly 900 pounds ).

We should all give Don Sloan and Chuck Maxwell a well done as always. Thanks again Chuck and Don for whipping up a program on such short notice.

#### NOMINATION OF OFFICERS

The nomination of officers for 1991 are as follows:

President: Zatis Murphy  
Vice President: Denis Muras  
Sec./Treas: Leo Orinderff  
Board of Director: Lewis Vallette

This years officers become Board of Directors for 1991:

Don Richardson  
Ted King  
Claude Emory

These members have been placed in nomination and we will vote in November.

#### PASADENA TOOL TENT SHOW

Johnny will be having his semi-annual Tent Show at Pasadena Industrial--Show Dates--- November 9, 10 and 11th.

See you there!!!!!!!!!!!!!!!!!!!!!!!!!!!!

#### SHOW AND TELL

Jimmy Harp's Group had made copies of an antique childs chair--they made the hardware and the dowels.

Bill Beggs had some end tables, turtles and bandsaw boxes.

Denis Muras had a very large painted train that he donated to the charity show. He now has plans for sale on how to bulld his bulldozer.

Fred Olsen had some wall hangings in the design of horses, a chest and dancing men.

Guy Meaders had a painted baby carriage.

Don Price brought a 6 foot long bench with lots and lots of hearts.

Ken Wallis demonstrated a clamp that he has designed to glue up boards. Made with all thread, metal brackets , and maple bars.

Don Sloan made an interesting African Drum of Sitka Spruce, Western Red Cedar and redwood.

Tom Talasek bullds about 20 Cedar Chests a

year, which he donated one to the charity show.

Bill Smith had some very tiny old fashion style telephones.

#### BUY AND SELL

Denis Muras has plans (\$12.00) available for sale to show you how to bulld his bulldozer.

#### CHARITY SALE SHOW

Well another successfull show has come and gone--till next year.

Claude is counting the sales at this moment and will have a complete tally at the November meeting.

Sam Zeissman would like to thank all the members for their contributions and hard work.

Without the members hard work we could not have such a successfull show.

Sam expresses his gratitude to his Committee Chairpersons:

Pick-up and Set-up-----Bill Hochmuth  
Demonstrations-----Bill Beggs and Chuck Maxwell  
Time Sheet-----Bill Baker  
Publicity-----Bill Sallans  
Telephone-----Bob Odom  
Group Projects-----Sharon Buckley

#### MONEY-MONEY-MONEY-MONEY

If you have any Charity show money ---Bring it to the November Meeting--so we can have an acurate count---Don't forget.

#### PROJECTS NOT SOLD-----

If you want your donation returned--you must pick it up at the November meeting---we will donate to a charity an Items not picked up !

#### ANNUAL DECEMBER DINNER AND GRAND SHOW AND TELL

If your coming to the dinner the Deadline is November 12, 1990--Fill out the application --give it to Claude Emory at the meeting or mail it to him Now.

#### NOVEMBER MEETING

WHEN: NOVEMBER10, 1990 9:00 A. M.

WHERE: BAYLAND COMMUNITY CENTER  
ON BISSONNET AT HILLCROFT

PROGRAM: The scheduled program has been postponed till 1991 and Ted King is working on a replacement program .

If all is well It might be Doc Forkner if he is feeling well enough.

So this month's program will be a surprise.

See you there!

Do to the Charity Show the column on Dust collection will continue next month!!!!!!!!!!!!

ANNUAL DINNER MEETING

REGISTRATION

WOODWORKERS CLUB OF HOUSTON                      DECEMBER 7TH DINNER MEETING

RICE UNIVERSITY FACULTY CLUB                      7:00 P.M.--FELLOWSHIP  
8:00 P.M.--DINNER

COST: \$15.00 PER PERSON MEMBERS AND MEMBERS SPOUSE  
COST: \$20.00 PER PERSON NON-MEMBERS

MEMBER NAME \_\_\_\_\_

SPOUSE NAME \_\_\_\_\_

NON-MEMBER GUEST \_\_\_\_\_

Pleas enclose a check with your reservations. Make check payable to WOODWORKERS CLUB OF HOUSTON. Send check to Claude Emory 840 Le Green Houston, Texas 77008 861-3495.

DEADLINE--DEADLINE--DEADLINE--DEADLINE--DEADLINE--DEADLINE

November 12, 1990-----November 12, 1990

---

ANNUAL DINNER MEETING

REGISTRATION

WOODWORKERS CLUB OF HOUSTON                      DECEMBER 7TH DINNER MEETING

RICE UNIVERSITY FACULTY CLUB                      7:00 P.M.--FELLOWSHIP  
8:00 P.M.--DINNER

COST: \$15.00 PER PERSON MEMBERS AND MEMBERS SPOUSE  
COST: \$20.00 PER PERSON NON-MEMBERS

MEMBER NAME \_\_\_\_\_

SPOUSE NAME \_\_\_\_\_

NON-MEMBER GUEST \_\_\_\_\_

Pleas enclose a check with your reservations. Make check payable to WOODWORKERS CLUB OF HOUSTON. Send check to Claude Emory 840 Le Green Houston, Texas 77008 861-3495.

DEADLINE--DEADLINE--DEADLINE--DEADLINE--DEADLINE--DEADLINE

November 12, 1990-----November 12, 1990

---



Pasadena Industrial Presents- *Our Fall 90'*

# Power & Hand Tool Show

*Come See Whats New!*

## Nov. 9, 10 & 11

**Fri 12-5:30 Sat 8 - 5:30 Sun 12 - 5:30**



Special Pricing!  
Door Prizes!  
Free Hot Dogs & Drinks!

Call 472-5588 for information  
P.S. When our people ask for \$2 admission, just show them this invitation or tell them "Johnny Sent Me"

## Hardwood Lumber Co. Lawndale Division Imported and Domestic

Marine Plywood  
Parana Pine  
Teak

Honduran Mahogany  
Exotic Hardwoods  
Domestic Hardwoods  
WALNUT - BIRCH - ASH - CHERRY  
CYPRESS - RED AND WHITE OAK  
AND OTHERS

Quality  
Hardwoods - Softwoods - Plywoods  
Mouldings & Squares

MON. - FRI. 7:30 TO 4:30  
SAT. 8:00 TO 1:00

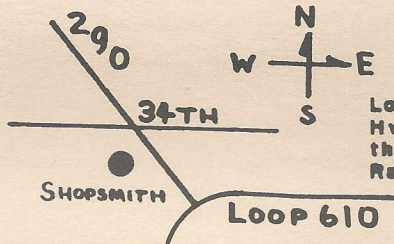
5401 Lawndale  
(713) 921-6131

A COMPLETE SELECTION OF FINISHING SUPPLIES.

Exp. 12/90

## Your Complete Woodworking Center Check Out Our Hardwoods, Our Prices Are Low

Hours:  
Monday to Friday:  
10:00 a.m. to 8:00 p.m.  
Saturday  
9:00 a.m. to 5:00 p.m.

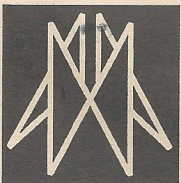


### Shopsmith Inc.

Located at 34th St. & Hwy. 290 to Austin on the West side in the Randall's Strip Center.

Northway Shopping Center  
10965A Northwest Frwy.  
Houston, TX 77092  
Phone: (713) 681-5200

Exp. 1/91

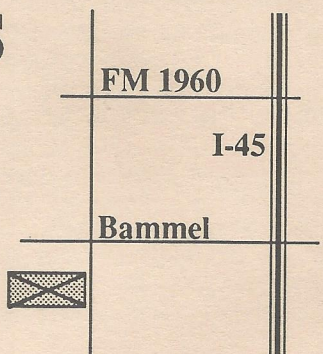


## AUSTIN HARDWOODS

13001 VETERANS MEMORIAL DR.  
HOUSTON, TEXAS 77014

### 440-0764

We stock over 80 species of lumber including rare exotics and turning stock. Plywood, Veneer, Moulding, Flooring, Tools, Millwork, Paneling Etc. also available



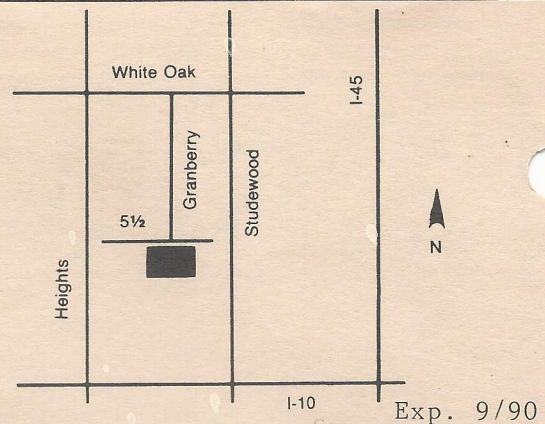
Exp. 8/89

# HARDWOOD LUMBER CO.

700 E. 51/2 St. (In The Heights)  
Houston, Texas 77007  
(713) 862-6628  
Hours: M-F 7:30-5:00, Sat. 8:30-1:30

We stock over 65 species of lumber including  
hard to find exotics!

**Also:** Plywood, Veneer, Moulding, Formica,  
Custom Milling, Woodworking Tools, Books, etc.



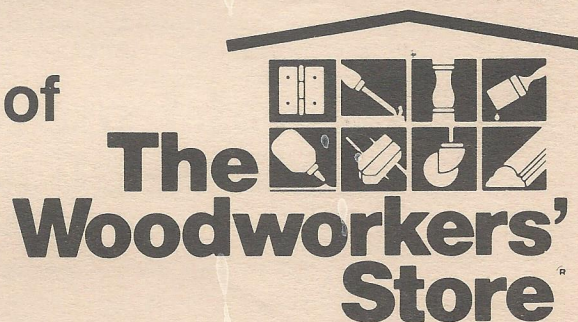
## Send Today for the Most Complete Catalog Selection of Woodworking Supplies

Please Enclose \$1.00 (3rd class) or \$2.00 (1st class)

Name \_\_\_\_\_  
Address \_\_\_\_\_  
City \_\_\_\_\_ State \_\_\_\_\_ Zip \_\_\_\_\_

*Orders Shipped Within 48 Hours*

Exp. 1/91



21801 Industrial Blvd., Rogers, MN 55374

PRINTED BY SPEEDY PRINTING SERVICE OF TEXAS 3727 W. ALABAMA, HOUSTON, TX. 77027 (713) 877-8466



5117 April Lane, Houston, Texas 77092

Hours: M-F 7:30-5:00 SAT 8:30-12:30

(713) 686-6176 Phone

(713) 686-3217 Fax

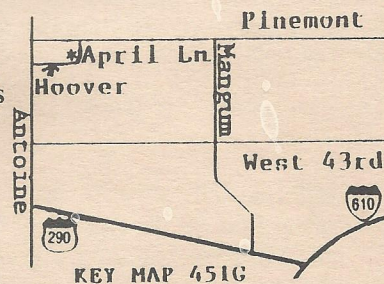
### DOMESTIC & IMPORTED HARDWOODS

Ash, Basswood, Birch, Cherry, Mahogany, Maple, Red Oak, White Oak,  
Poplar, Walnut Etc.

High Quality Domestic & Imported  
Plywoods, Softwoods, Hardwood Veneer  
Edgebanding & Hardwood Pliable Veneers  
*Excellent Service & Competitive Prices!*

ON SITE CUSTOM MILLING  
TO YOUR SPECIFICATIONS,  
S2S, S2SIE, S4S  
(No order too large or small)

Expires 8/91



Woodworkers Club of Houston  
P.O. Box 34481  
Houston, Tx 77234

